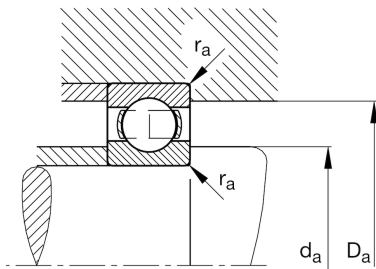
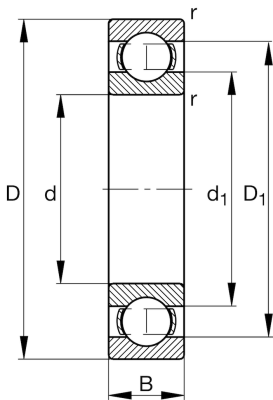


**FAG****608**

Deep groove ball bearing

Schaeffler ID:
0383906470000Deep groove ball bearing 60, single row,
steel sheet metal cage

Technical information



Main Dimensions & Performance Data

d	8 mm	Bore diameter
D	22 mm	Outside diameter
B	7 mm	Width
C_r	3.297 N	Basic dynamic load rating, radial
C_{0r}	1.368 N	Basic static load rating, radial
C_{ur}	74 N	Fatigue load limit, radial
n_G	47.000 1/min	Limiting speed
n_{gr}	31.500 1/min	Reference speed
	12 g	{Weight}

Mounting dimensions

$d_{a \min}$	10 mm	Minimum diameter shaft shoulder
$D_{a \max}$	20 mm	Maximum diameter of housing shoulder
$r_{a \max}$	0,3 mm	Maximum fillet radius

Dimensions

r_{\min}	0,3 mm	Minimum chamfer dimension
D_1	18 mm	Shoulder diameter outer ring
d_1	12,14 mm	Shoulder diameter inner ring

Temperature range

T_{\min}	-30 °C	Operating temperature min.
T_{\max}	120 °C	Operating temperature max.

Calculation factors

f_0	12,4	Calculation factor
-------	------	--------------------