



**The Timken Company**

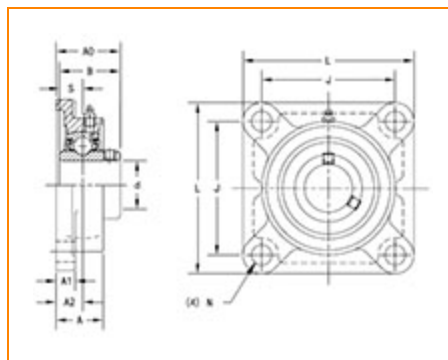
4500 Mt Pleasant St. NW

N. Canton, OH 44720

**Phone:** (234) 262-3000

**E-Mail:** [CustomerCAD@timken.com](mailto:CustomerCAD@timken.com) • **Web site:** [www.timken.com](http://www.timken.com)

## Part Number UCF322, UCF 300 Four-Bolt Flanged Mounted Bearings - Set Screw Locking



[Specifications](#) | [Dimensions](#) | [Basic Load Ratings](#)

### Specifications

<b>Bearing Number</b>	UC322
<b>Shaft Size d</b>	110 mm
<b>Locking Style</b>	Set Screw Locking
<b>Housing Construction</b>	Four-Bolt Square Flange

### Dimensions

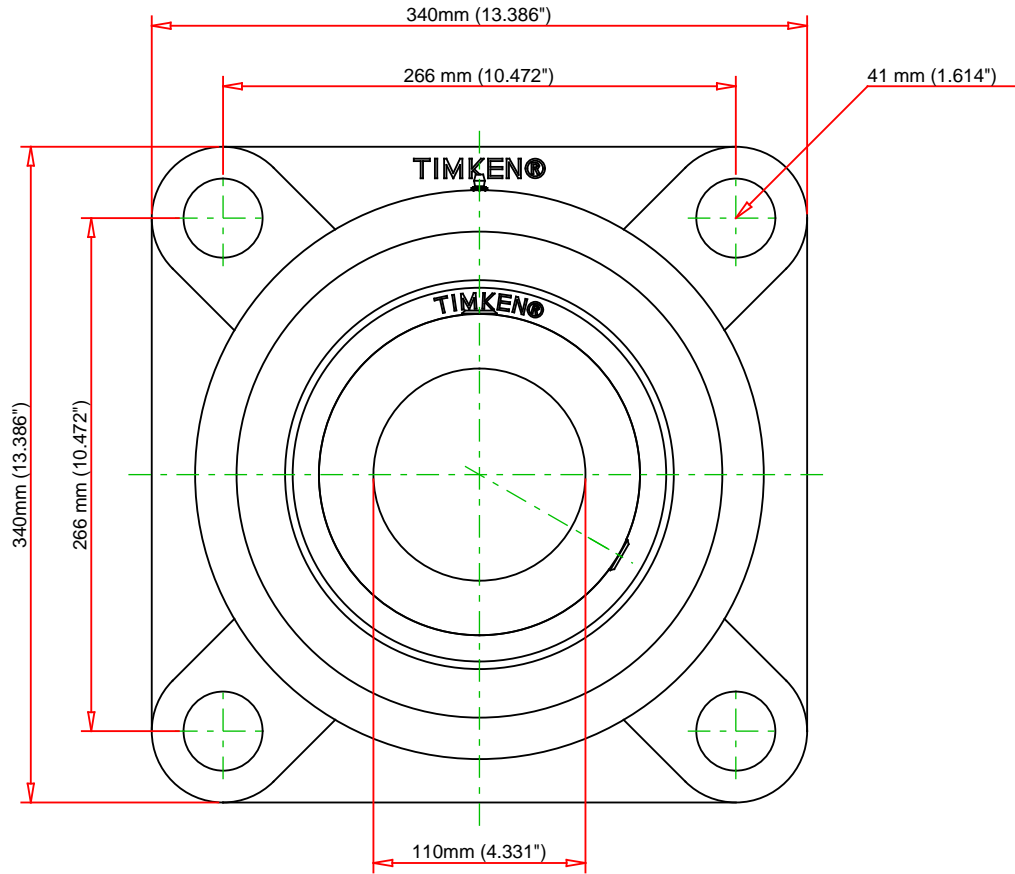
<b>Total Length L</b>	340 mm 13.386 in
<b>Housing Width A</b>	96 mm 3.78 in
<b>Bolt Hole Spacing J</b>	266 mm 10.472 in



<b>Bolt Hole Size N</b>	41 mm 1.614 in
<b>Flange Thickness A1</b>	35 mm 1.378 in
<b>Center of Bearing from Housing End A2</b>	60 mm 2.362 in
<b>Inner Ring Width B</b>	117 mm 4.606 in
<b>Center of Bearing from Bearing End S</b>	46 mm 1.811 in
<b>Dimension A0</b>	131 mm 5.156 in
<b>Bolt Size</b>	M36
<b>Grease Nipple Size</b>	A-R1/8

## Basic Load Ratings

<b>Static Load Rating</b>	180000 N 40466 lbf
<b>Dynamic Load Rating</b>	205000 N 46086 lbf



FOR DISCUSSION ONLY