



**The Timken Company**

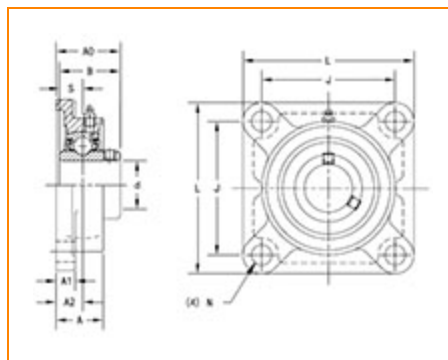
4500 Mt Pleasant St. NW

N. Canton, OH 44720

**Phone:** (234) 262-3000

**E-Mail:** [CustomerCAD@timken.com](mailto:CustomerCAD@timken.com) • **Web site:** [www.timken.com](http://www.timken.com)

## Part Number UCF321, UCF 300 Four-Bolt Flanged Mounted Bearings - Set Screw Locking



[Specifications](#) | [Dimensions](#) | [Basic Load Ratings](#)

### Specifications

<b>Bearing Number</b>	UC321
<b>Shaft Size d</b>	105 mm
<b>Locking Style</b>	Set Screw Locking
<b>Housing Construction</b>	Four-Bolt Square Flange

### Dimensions

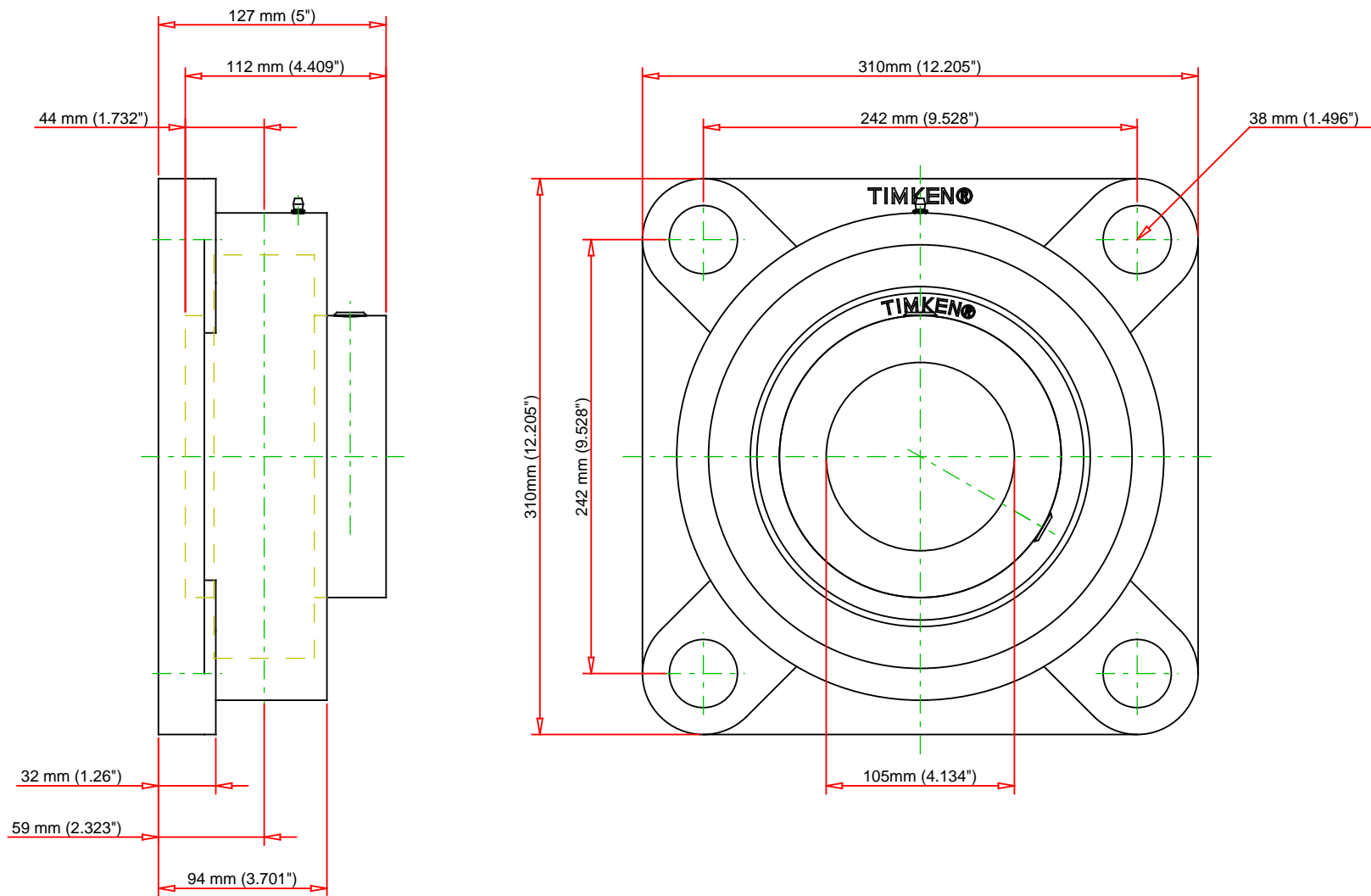
<b>Total Length L</b>	310 mm 12.205 in
<b>Housing Width A</b>	94 mm 3.701 in
<b>Bolt Hole Spacing J</b>	242 mm 9.528 in



<b>Bolt Hole Size N</b>	38 mm 1.496 in
<b>Flange Thickness A1</b>	32 mm 1.26 in
<b>Center of Bearing from Housing End A2</b>	59 mm 2.323 in
<b>Inner Ring Width B</b>	112 mm 4.409 in
<b>Center of Bearing from Bearing End S</b>	44 mm 1.732 in
<b>Dimension A0</b>	127 mm 5 in
<b>Bolt Size</b>	M33
<b>Grease Nipple Size</b>	A-R1/8

## Basic Load Ratings

<b>Static Load Rating</b>	153000 N 34396 lbf
<b>Dynamic Load Rating</b>	184000 N 41365 lbf



Bearing Number	UC321			
Load Ratings - C <sub>r</sub>	41365	lbf	184000	N
Load Ratings - C <sub>0r</sub>	34396	lbf	153000	N
Weight	66.6	lb	30.2	kg
Bolt Size	M33			

**TIMKEN**

THE TIMKEN COMPANY  
NORTH CANTON, OHIO USA

**UCF321**

UCF 300 Four-Bolt Flanged Mounted  
Bearings - Set Screw Locking

Every reasonable effort has been made to ensure the accuracy of the information contained in this writing, but no liability is accepted for errors, omissions or for any other reason.

**FOR DISCUSSION ONLY**