

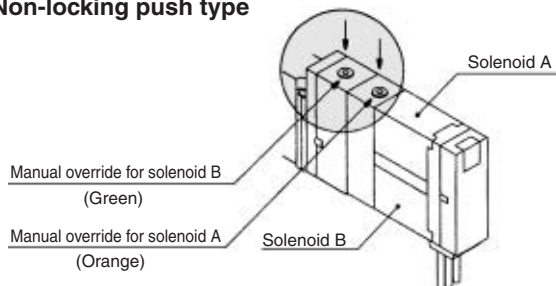
⚠ Precautions

Be sure to read before handling. For Safety Instructions and Solenoid Valve Precautions, refer to page 1-7-2.

Manual Override Operation

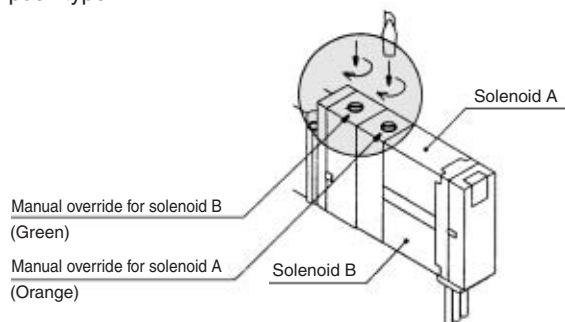
⚠ Warning

■ Non-locking push type



■ Push-turn locking slotted type (Type D)

After pushing down, turn in the direction of the arrow. If you do not turn, the mechanism is the same as that of a non-locking push type.



⚠ Caution

When locking the manual override on the push-turn locking slotted type, be sure to push it down before turning. Turning without first pushing it down can cause damage to the manual override and other trouble such as air leakage, etc.

⚠ Caution

When operating the lock with the driver, use a watchmakers' screwdriver and turn lightly. [Torque: 0.1 N·m or less]

Exhaust Restriction

⚠ Caution

Since Series SX has a mechanism that the exhausted air from pilot valve is gathered with the exhaust of the main valve inside, make sure that the exhaust port is not restricted.

Usage of SX3000/5000/7000 as a 3 Way Valve

⚠ Caution

In the case of using a 5 port valve

Series SX3000, 5000, 7000 may be used as and N.C. or N.O. 3 way valve by plugging one of the A, B ports. Be sure not to plug the exhaust ports. Can be used when a double solenoid, 3 way valve is required.

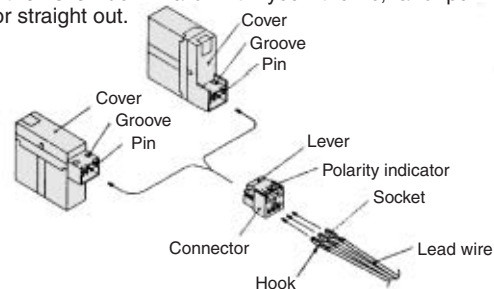
Plug position		B port	A port
Actuation		N.C.	N.O.
Number of solenoids	Single		
	Double		

How to Use Plug Connector

⚠ Caution

1. Attaching and detaching connectors

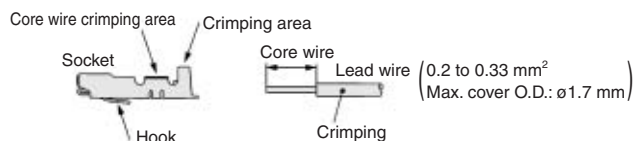
- To attach a connector, hold the lever and connector unit between your fingers and insert straight onto the pins of the solenoid valve so that the lever's pawl is pushed into the groove and locks.
- To detach a connector, remove the pawl from the groove by pushing the lever downward with your thumb, and pull the connector straight out.



2. Crimping the lead wire and socket

- Peel 3.2 to 3.7 mm of the tip of lead wire, enter the core wires neatly into a socket and crimp it with a special crimp tool. Be careful so that the cover of lead wire does not enter into the crimping part.

(Crimping tool: Model no. DXT170-75-1)



3. Attaching and detaching lead wires with sockets

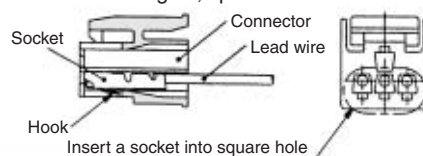
● Attaching

Insert the sockets into the square holes of the connector (with + and - indication) and, continue to push the sockets all the way in until the lock by hooking into the seats in the connector. (When they are pushed in, their hooks open and they are locked automatically.) Then confirm that they are locked by pulling lightly on the lead wires.

● Detaching

To detach a socket from a connector, pull out the lead wire while pressing the socket's hook with a stick having a thin tip (approx. 1 mm).

If the socket is used again, spread the hook outward.



■ Plug connector lead wire lengths

Standard length is 300 mm, but the following lengths are also available.

How to order L/M connector assembly

Positive common specifications

For single solenoid: **SX100-40-4S-**

For double solenoid: **SX100-40-4D-**

For 3 position

Negative common specifications

For single solenoid: **SX100-41-4S-**

For double solenoid: **SX100-41-4D-**

For 3 position

How to Order

Include the connector assembly part number together with the part number for the plug connector's solenoid valve without connector.

● Lead wire length

Nil	300 mm
6	600 mm
10	1000 mm
15	1500 mm
20	2000 mm
25	2500 mm
30	3000 mm
50	5000 mm

<Example>

Lead wire length 2000 mm
SX3120-SLO-M5
SX100-40-4S-20

Common Connector Assembly for Manifold

⚠ Caution

With the common connector assembly all of the common lead wires are tied together and this reduces wiring time.

Common connector assembly part numbers

Positive common specifications
For single solenoid
SX100-42-4S



For double solenoid, 3 position type
SX100-42-4D



With common lead wire for single solenoid
SX100-40-4S



With common lead wire for double solenoid, 3 position type
SX100-40-4D



(Lead wire length 300 mm)

Negative common specifications
For single solenoid
SX100-43-4S



For double solenoid, 3 position type
SX100-43-4D



With common lead wire for single solenoid
SX100-41-4S



With common lead wire for double solenoid, 3 position type
SX100-41-4D



(Lead wire length 300 mm)

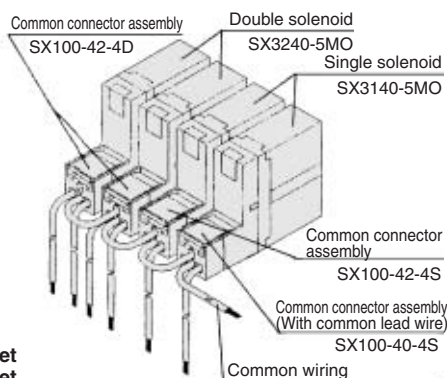
How to Order

When ordering a common connector lead wire assembly, indicate the model no. for manifold, solenoid valve and common connector assembly. For more complicated assemblies, refer to the manifold specification sheet.

Note1) Applications like connectors not wired to a valve or when there is a blank station between valves is not possible.

Note2) Designate "Without connector" of plug connector style for solenoid valve. Grommet style is not applicable.

Note3) Connector assembly with lead wire for place where the signals are transmitted to the common wiring. (Only the valves of first station and/or last station of manifold are compatible to connector with lead wire for common.)

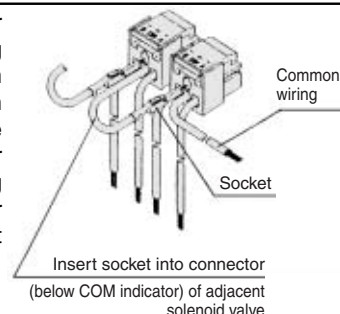


- SS5X3-41-04-C6 1 set
 * SX3140-5MO 2 set
 * SX3240-5MO 2 set
 * SX100-40-4S 1 set (Single solenoid with lead wire for common)
 * SX100-42-4S 1 set (Single solenoid)
 * SX100-42-4D 2 set (Double solenoid, 3 position)

→ The asterisk denotes the symbol for assembly. Prefix it to the part nos. of the solenoid valve, etc.

Common Connector Assembly Wiring

When only common connector assembly is ordered, wiring should be done as shown in How to Order Common Connector Assembly the illustration to the right. Refer to "How to Use Plug Connector" on page 1-6-8 for further information on socket mounting.



Flat ribbon cable/Connector assembly no. for 20P, 41P, 42P

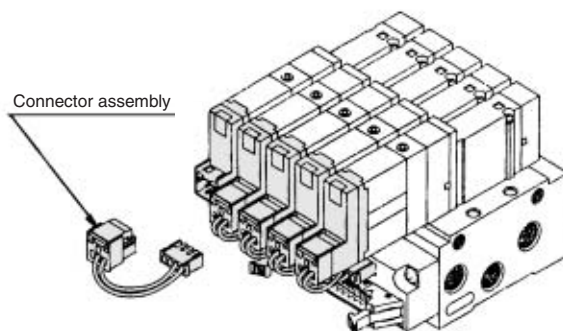
SX3000/5000/7000

● Positive common specifications

For single solenoid: SX3000-23-1A
 For double solenoid, 3 position type: SX3000-23-2A

● Negative common specifications

For single solenoid: SX3000-24-1A
 For double solenoid, 3 position type: SX3000-24-2A



⚠ Caution

One-touch Fittings

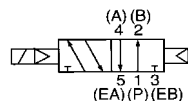
The pitch of each piping port (P, A, B, etc.) for Series SX is based on the assumption that Series KJ One-touch fittings will be used. For this reason, when other fittings are used, they may interfere with one another depending on their types and sizes. Therefore, the dimensions of the fittings to be used should first be confirmed in their respective catalogs.

Construction

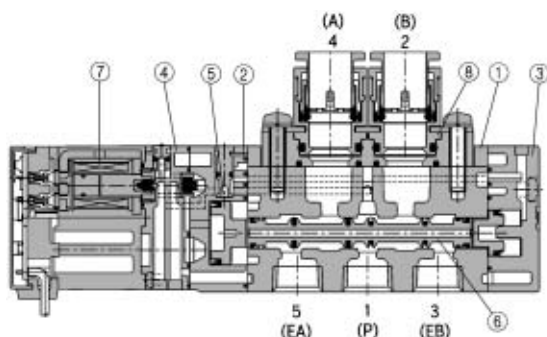
Series SX

JIS Symbol

2 position single

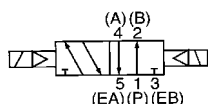


2 position single

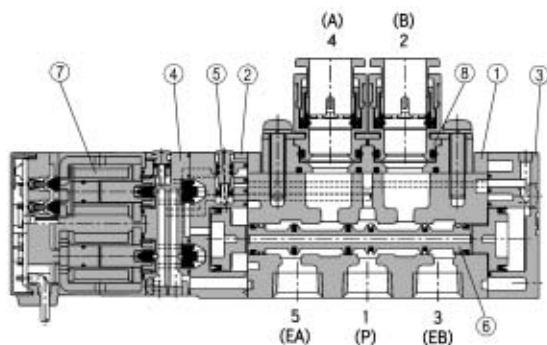


JIS Symbol

2 position double



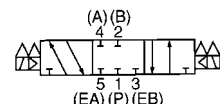
2 position double



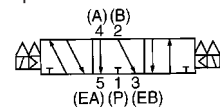
3 position closed center/exhaust center/pressure center

JIS Symbol

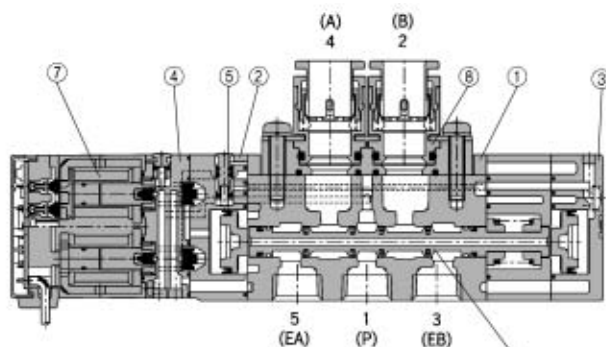
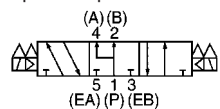
3 position closed center



3 position exhaust center



3 position pressure center



(This figure shows a closed center type.)

Component Parts

No.	Description	Material	Note
①	Body	Aluminum die-casted (SX3000: Zinc die-casted)	White
②	Adapter plate	Resin	White
③	End plate	Resin	White
④	Pilot body	Resin	White
⑤	Piston	Resin	—
⑥	Spool valve assembly	Aluminum, HNBR	—
⑦	Molded coil	Resin	Gray

Replacement Parts

No.	Description	Part no.
⑧	Port block assembly	See "How to Order Port Block Assembly" on page 1-6-7.

How to Order Connector Assembly for L/M Plug Connector

Positive common specifications

For single solenoid: **SX100-40-4S**For double solenoid,
3 position: **SX100-40-4D**

Negative common specifications

For single solenoid: **SX100-41-4S**For double solenoid,
3 position: **SX100-41-4D**

Lead wire length

Nil	300 mm
6	600 mm
10	1000 mm
15	1500 mm
20	2000 mm
25	2500 mm
30	3000 mm
50	5000 mm



For detailed information on connector assembly, refer to page 1-6-8.