



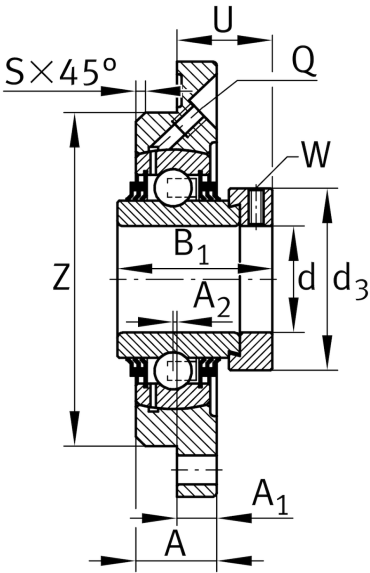
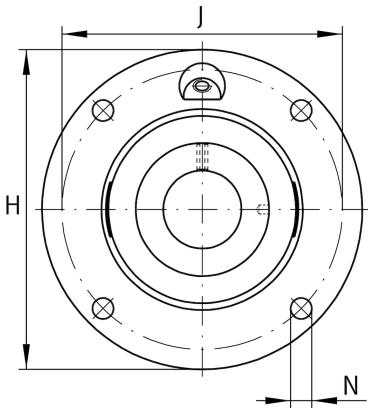
### TME70-XL

Flanged housing unit

Schaeffler ID:  
0009832090000

Housing units TME, four-bolt flanged housing units, cast iron, centring spigot, eccentric locking collar, T seals

Technical information



Main Dimensions & Performance Data

d	70 mm	Bore diameter
H	215 mm	Height flange
B <sub>1</sub>	66 mm	Locking collar total width
U	44.5 mm	Total height unit
C <sub>r</sub>	66,000 N	Basic dynamic load rating, radial
C <sub>0r</sub>	44,000 N	Basic static load rating, radial
C <sub>ur</sub>	2,300 N	Fatigue load limit, radial
	5.02 kg	Weight

Mounting dimensions

J	177 mm	Distance fixing bore
J	177 mm	Pitch circle diameter (holes)
N	18 mm	Fixing bore
Z	150 mm	Diameter spigot
	h8	Diameter spigot clearance
n	4	Number of screwing holes

Dimensions

A <sub>1</sub>	18 mm	Thickness of flange
S	6 mm	Chamfer width
Q	Rp1/8	Connection thread lubrication

Additional information

GE70-XL-KTT-B	Bearing designation
---------------	---------------------