



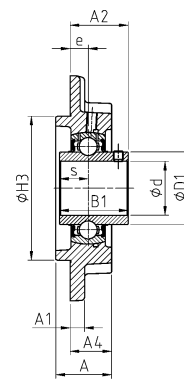
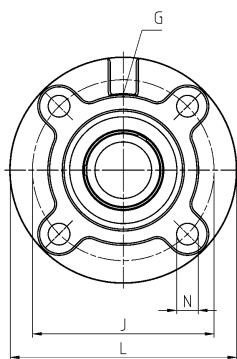
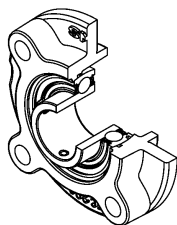
Designation scheme

Housing designs

Design		Description	Dimension lists starting on page
C200		Cylindrical cartridge housing made of grey cast iron, relubricatable	138
C300		Cylindrical cartridge housing made of grey cast iron, relubricatable	138
EHE200		Hanger housing made of grey cast iron with metric fixing threads, relubricatable	146
F200		Square flanged housing made of grey cast iron with 4 fixing holes, relubricatable	72
F300		Square flanged housing made of grey cast iron with 4 fixing holes, relubricatable	72
FA200		Oval flanged housing made of grey cast iron with 1 fixing hole and 1 slot, relubricatable	116
FAE200		Oval flanged housing made of grey cast iron with 1 fixing hole and 1 slot, relubricatable	114
FC200		Round flanged housing made of grey cast iron with centring rim and 4 fixing holes, relubricatable	84
FCE200		Round flanged housing made of grey cast iron with centring rim and 4 fixing holes, relubricatable	80
FD200		Flat oval flanged housing made of grey cast iron with 2 fixing or tapped bores, relubricatable	112
FE200		Square flanged housing made of grey cast iron with 4 fixing holes, relubricatable	68
FEE200		Round flanged housing made of grey cast iron with centring rim and 4 fixing holes, relubricatable	88
FL200		Oval flanged housing made of grey cast iron with 2 fixing holes, relubricatable	100
FL300		Oval flanged housing made of grey cast iron with 2 fixing holes, relubricatable	100
FLE200		Oval flanged housing made of grey cast iron with 2 fixing holes, relubricatable	96
FLZ200		Oval flanged housing made of grey cast iron with centring rim and 2 fixing holes, relubricatable	108
FS300		Square flanged housing made of grey cast iron with centring rim and 4 fixing holes, relubricatable	90
FTE200		Triangular flanged housing made of grey cast iron with 3 fixing holes, relubricatable	94

Housing

FC200 relubricatable



UCFC200

Shaft diameter Unit		Main dimensions [mm]													
d [mm]		L	J	A	A1	A2	A4	H3 h8	e	N	s1	B	B1	s	D1
12	UCFC201	100	78	25,5	6	28,3	20,5	62	10	12	-	-	31,0	12,7	29,0
	USFC201	90	70	23,0	5	26,0	19,0	55	10	12	-	-	22,0	6,0	24,6
	ESFC201	90	70	23,0	5	32,1	19,0	55	10	12	-	-	28,6	6,5	-
	EXFC201	100	78	25,5	6	36,5	20,5	62	10	12	-	-	43,5	17,0	-
15	UCFC202	100	78	25,5	6	28,3	20,5	62	10	12	-	-	31,0	12,7	29,0
	USFC202	90	70	23,0	5	26,0	19,0	55	10	12	-	-	22,0	6,0	24,6
	ESFC202	90	70	23,0	5	32,1	19,0	55	10	12	-	-	28,6	6,5	-
	EXFC202	100	78	25,5	6	36,5	20,5	62	10	12	-	-	43,5	17,0	-
17	UCFC203	100	78	25,5	6	28,3	20,5	62	10	12	-	-	31,0	12,7	29,0
	USFC203	90	70	23,0	5	26,0	19,0	55	10	12	-	-	22,0	6,0	24,6
	ESFC203	90	70	23,0	5	32,1	19,0	55	10	12	-	-	28,6	6,5	-
	EXFC203	100	78	25,5	6	36,5	20,5	62	10	12	-	-	43,5	17,0	-
20	UCFC204	100	78	25,5	6	28,3	20,5	62	10	12	-	-	31,0	12,7	29,0
	USFC204	100	78	25,5	6	28,0	20,5	62	10	12	-	-	25,0	7,0	29,0
	ESFC204	100	78	25,5	6	33,4	20,5	62	10	12	-	-	30,9	7,5	-
	EXFC204	100	78	25,5	6	36,5	20,5	62	10	12	-	-	43,5	17,0	-
	UKFC205H	115	90	27,0	7	28,5	21,0	70	10	12	18,5	35,0	-	-	-
25	UCFC205	115	90	27,0	7	29,7	21,0	70	10	12	-	-	34,0	14,3	34,0
	USFC205	115	90	27,0	7	29,5	21,0	70	10	12	-	-	27,0	7,5	34,0
	ESFC205	115	90	27,0	7	33,4	21,0	70	10	12	-	-	30,9	7,5	-
	EXFC205	115	90	27,0	7	36,9	21,0	70	10	12	-	-	44,3	17,4	-
	UKFC206H	125	100	31,0	8	30,5	23,0	80	10	12	20,5	38,0	-	-	-
30	UCFC206	125	100	31,0	8	32,2	23,0	80	10	12	-	-	38,1	15,9	40,3
	USFC206	125	100	31,0	8	32,0	23,0	80	10	12	-	-	30,0	8,0	40,3
	ESFC206	125	100	31,0	8	36,7	23,0	80	10	12	-	-	35,7	9,0	-
	EXFC206	125	100	31,0	8	40,1	23,0	80	10	12	-	-	48,3	18,2	-
	UKFC207H	135	110	34,0	9	33,5	26,0	90	11	14	22,5	43,0	-	-	-
35	UCFC207	135	110	34,0	9	36,4	26,0	90	11	14	-	-	42,9	17,5	48,0
	USFC207	135	110	34,0	9	34,5	26,0	90	11	14	-	-	32,0	8,5	48,0
	ESFC207	135	110	34,0	9	40,4	26,0	90	11	14	-	-	38,9	9,5	-
	EXFC207	135	110	34,0	9	43,3	26,0	90	11	14	-	-	51,1	18,8	-
	UKFC208H	145	120	36,0	9	35,5	26,0	100	11	14	24,5	46,0	-	-	-
40	UCFC208	145	120	36,0	9	41,2	26,0	100	11	14	-	-	49,2	19,0	53,0
	USFC208	145	120	36,0	9	36,0	26,0	100	11	14	-	-	34,0	9,0	53,0
	ESFC208	145	120	36,0	9	43,7	26,0	100	11	14	-	-	43,7	11,0	-
	EXFC208	145	120	36,0	9	45,9	26,0	100	11	14	-	-	56,3	21,4	-
	UKFC209H	160	132	38,0	10	36,0	26,0	105	10	16	26,0	50,0	-	-	-