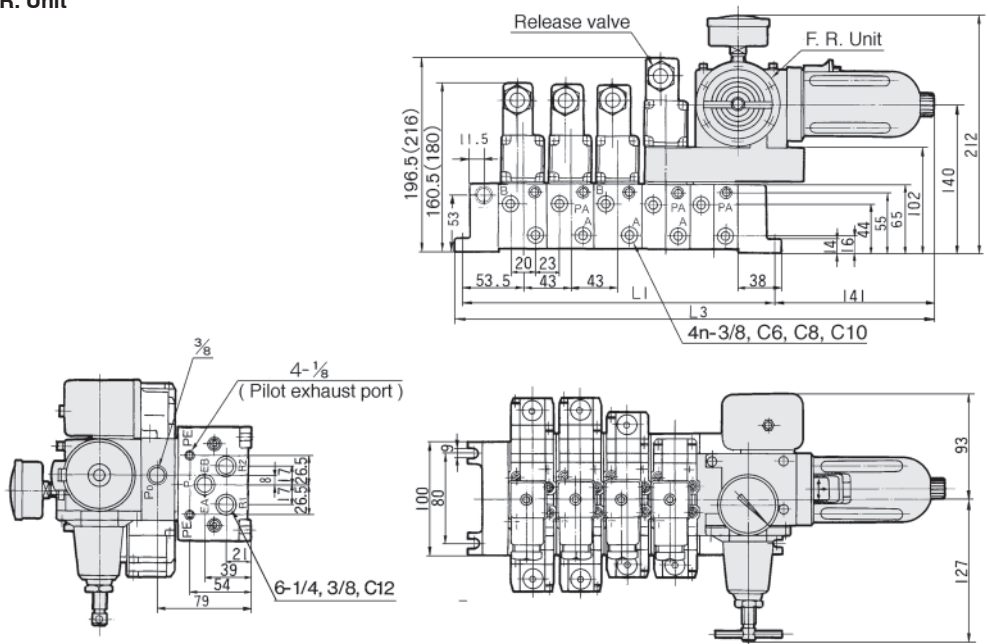


VS7-6

Manifold/Dimensions

F. R. Unit



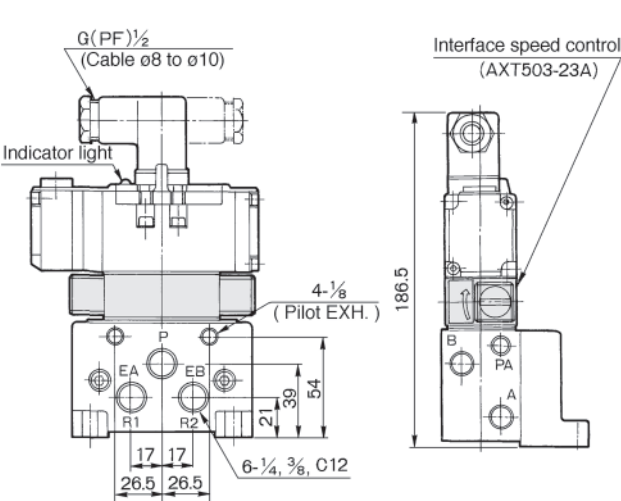
L: Dimensions

n	2	3	4	5	6	7	8	9	10	Equation
L1	150	193	236	279	322	365	408	451	494	$L1=43n+64$
L2	162	205	248	291	334	377	420	463	506	$L2=43n+76$
L3	297	340	383	426	469	512	555	598	641	$L3=43n+211$

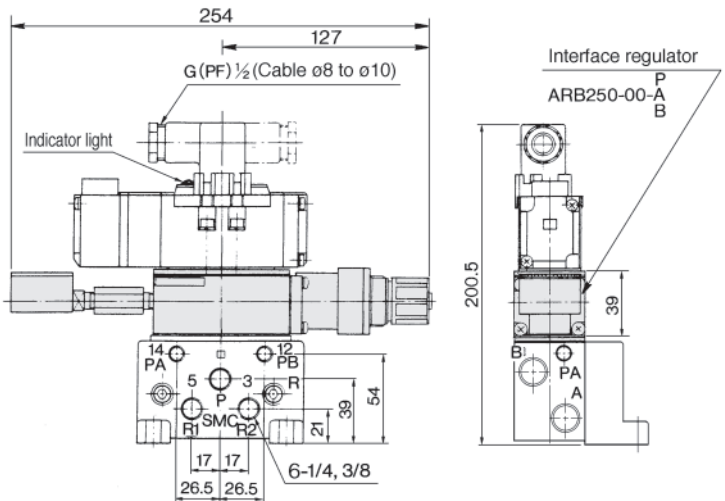
n: Station

() : In case of direct manual override style.

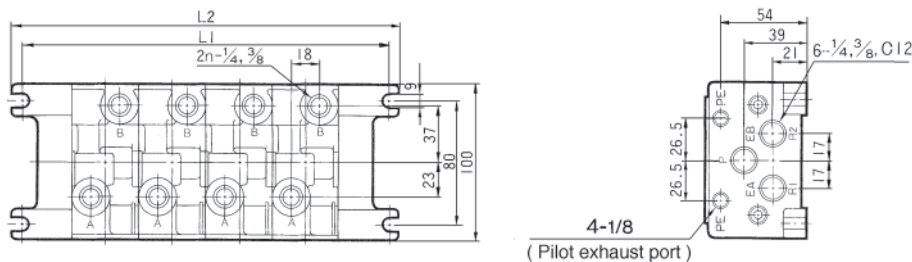
Interface Speed Control



Interface Regulator



Bottom Piping



How to Order

Thread

—	Rc (PT)
F	G (PF)
N	NPT
T	NPTF

Symbol

FG		FJG	
YZ*		FPG	
FHG		FIG*	

* Option

No. of solenoids

S	Single
D	Double

Rated voltage

1	100V AC
2	200V AC
3	24V DC
4	12V DC
9	Others (250V or less)

Option

—	None
N	Indicator light
M	Direct manual override
Z	Indicator light with surge voltage suppressor
MR	Wedge packing style with direct manual override
R	Wedge packing style
V	Individual pilot EXH

Port size of sub-plate

—	Without sub-plate
A03	Side piping 3/8
A04	Side piping 1/2
A06	Side piping 3/4
B03	Bottom piping 3/8
B04	Bottom piping 1/2
B06	Bottom piping 3/4

Connector

—	Connector
O	W/o connector

Ordering source area code

Code	areas
—	Japan, Asia Australia
E	Europe
N	North America

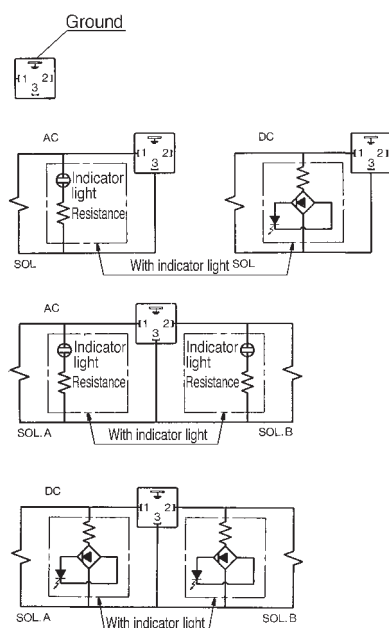
Note:
Manifold exploded view see page 1.19-34 for details.

⚠ Precautions

Be sure to read before handling. Refer to p.0-33 to 0-36 for Safety Instructions and common precautions.

⚠ Caution

DIN Connector (Wiring)



Power Source and Wiring

- ① Make sure all contacts are secure.
- ② Voltage should be held within the allowable voltage range.

Interface Regulator Specifications

Specifications

Interface regulator model	ARB350		
Applicable solenoid valve	VS7-8		
Regulation port	A	B	P
Max. operating pressure	1.0MPa ⁽¹⁾		
Set pressure range	0.1 to 0.83MPa ⁽²⁾		
Ambient and fluid temperature	5 to 60°C ⁽³⁾		
Pressure gauge port size	1/8		
Weight (kg)	0.83		
Air supply side eff. area (mm ²)	P → A	40	27
S (P=0.7MPa, P1=0.5MPa)	P → B	31	27
Air exhaust side eff. area	A → EA	60 mm ²	
S (P2=0.5MPa)	B → EB	53 mm ²	

Note 1) Maximum operating pressure of solenoid valve is 0.9 MPa.

Note 2) Be sure to set pressure within setting pressure range of the solenoid valve.

Note 3) Solenoid valve: Max. 50°C

Note 4) Synthesized effective area with 2 position single style solenoid valve.

Note 5) •Supply pressure to interface regulator only from P port except when it is used with reverse pressure style valve.

- Use the ARB210 or ARB310 model to combine a pressure centre valve and the A and B port pressure reduction of a spacer style regulator.
- Use the ARB210 or ARB310 model to combine a reverse pressure valve and a spacer style regulator. The P port pressure reduction cannot be used.
- To use a perfect valve and a spacer style regulator, use a manifold or a sub plate as the standard and stack in the following order: the perfect spacer, spacer style regulator, and the valve.
- When a closed centre valve is combined with the A and B port pressure reduction of a spacer style regulator, it cannot be used for intermediate stops of the cylinder because of the leakage from the relief port of the regulator.

How to calculate flow rate

Refer to p.0-36 for flow rate calculation.