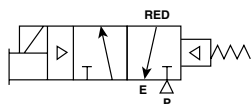


All units include pop-up indicator for pneumatic output. Red indicates NNP / NC function. Yellow indicates NP / NO function. All model numbers shown include non-locking manual override. (For other voltages, use component parts shown on next page).



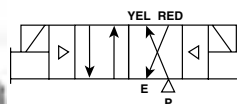
PS1E21102\*\*



PS1E111



PS1E29102\*\*



PS1E29102\*\*

### Assembled Units

Single Solenoid - Spring Return 3/2 -  
Normally Non-Passing (NNP) /  
Normally Closed (NC)

Voltage	Output Port Push-In Connection Size	
	5/32" (4 mm) Tube	1/4" Tube
12V DC	PS1E21102J	PS1E216702J
<b>24V DC</b>	<b>PS1E21102B</b>	<b>PS1E216702B</b>
24V AC	PS1E21101B	PS1E216701B
<b>120V AC</b>	<b>PS1E21101F</b>	<b>PS1E216701F</b>

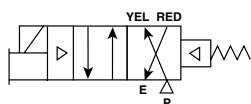
Weight: 0.21 lb (0.095 kg)

### Valves Without Solenoid Operators

Output Port Push-In Connection Size		
5/32" (4mm) Tube	6mm Tube	1/4" Tube
PS1E111	PS1E116	PS1E1167



PS1E28102\*\*



PS1E181

### Assembled Units

Single Solenoid - Spring Return 4/2

Voltage	Output Port Push-In Connection Size	
	5/32" (4 mm) Tube	1/4" Tube
12V DC	PS1E28102J	—
<b>24V DC</b>	<b>PS1E28102B</b>	<b>PS1E286702B</b>
24V AC	PS1E28101B	PS1E286701B
<b>120V AC</b>	<b>PS1E28101F</b>	<b>PS1E286701F</b>

Weight: 0.36 lb (0.165 kg)

### Valves Without Solenoid Operators

Output Port Push-In Connection Size		
5/32" (4mm) Tube	6mm Tube	1/4" Tube
PS1E181	PS1E186	PS1E1867

### Assembled Units

Double Solenoid 4/2

Voltage	Output Port Push-In Connection Size	
	5/32" (4 mm) Tube	1/4" Tube
12V DC	PS1E29102J	—
<b>24V DC</b>	<b>PS1E29102B</b>	—
24V AC	PS1E29101B	—
<b>120V AC</b>	<b>PS1E29101F</b>	<b>PS1E296701F</b>

Weight: 0.45 lb (0.205 kg)

### Valves Without Solenoid Operators

Output Port Push-In Connection Size		
5/32" (4mm) Tube	6mm Tube	1/4" Tube
PS1E191	PS1E196	PS1E1967

## Head and Tail Sets

Used to mount valves to DIN rail and provide supply and exhaust ports. All hardware is included.

Single supply type supplies from one end of the manifold assembly with the other end blocked.

Double supply type provides pressure and exhaust ports on both ends of the assembly.



PS1E1027

Push-In Connection Ports	Single Supply	Double Supply
1/4" Tube	PS1E1017	PS1E1027
6mm Tube	PS1E101	PS1E102

Wt: 0.22 lb (0.100 kg) Wt: 0.28 lb (0.125 kg)

## Intermediate Supply Module - PS1E10387

1/8" Pipe port for supply and exhaust ports.

Allows replenishment or isolation of the supply and / or exhaust ports using included plugs.

Weight: 0.28 lb (0.125 kg)



PS1E10387

### 1/8" Pipe Supply & Exhaust

NPT	PS1E10387
BSP	PS1E1038