

## How to Order

### Type of actuation

1	2 position single solenoid
2	2 position double solenoid
3	3 position closed center
4	3 position exhaust center
5	3 position pressure center

### Light/surge voltage suppressor Electrical entry for G, H, L, M, W

Nil	Without light/surge voltage suppressor
S	With surge voltage suppressor
Z	With light/surge voltage suppressor
R	With surge voltage suppressor (Non-polar type)
U	With light/surge voltage suppressor (Non-polar type)

- \* For AC voltage valves there is no "S" option. It is already built-in to the rectifier circuit.
- \* For type "R" and "U", DC voltage is only available.
- \* Power saving circuit is only available in the "Z" type.

### Electrical entry for D

Nil	Without light/surge voltage suppressor
S	With surge voltage suppressor (Non-polar type)
Z	With light/surge voltage suppressor (Non-polar type)

- \* DOZ is not available.
- \* For AC voltage valves there is no "S" option. It is already built-in to the rectifier circuit.

### Rated voltage

DC		AC (50/60 Hz)	
5	24 VDC	1	100 VAC
6	12 VDC	2	200 VAC
V	6 VDC	3	110 VAC [115 VAC]
S	5 VDC	4	220 VAC [230 VAC]
R	3 VDC		

- \* DC specifications of type D and DO is only available with 12 and 24 VDC.

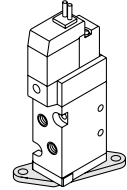
- \* For type W□, DC voltage is only available.

### A, B port size

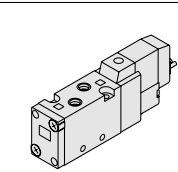
M5	M5 x 0.8
C4	One-touch fitting for Ø4
C6	One-touch fitting for Ø6
N3	One-touch fitting for Ø5/32"
N7	One-touch fitting for Ø1/4"

### Bracket

Nil: Without bracket  
F: With bracket



Note) The mounting bracket is supplied unattached.



(For manifold type 20)

### Body ported

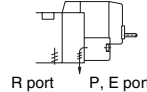
SYJ5 1 2 0 □ 5 L □ □ M5 □

### Base mounted

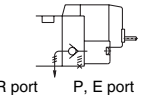
SYJ5 2 4 0 □ 5 L □ □ □ □

### Body option

0: Pilot valve individual exhaust for the pilot valve



3: Common exhaust type for main and pilot valve



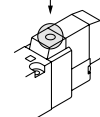
### Coil specifications

Nil	Standard
T	With power saving circuit <24 V, 12 VDC only>

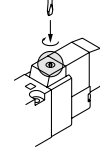
- \* Power saving circuit is not available in the case of D, DO or W□ type.

### Manual override

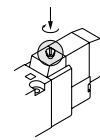
Nil: Non-locking push type



D: Push-turn locking slotted type



E: Push-turn locking lever type

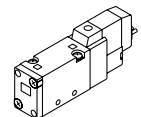


### Thread type

Nil	Rc
F	G
N	NPT
T	NPTF

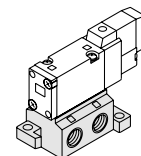
### Port size

Nil: Without sub-plate



(With gasket and screws)

01: 1/8 With sub-plate



### Electrical entry

24, 12, 6, 5, 3 VDC 100, 110, 200, 220 VAC				24, 12 VDC 100, 110, 200, 220 VAC		24, 12, 6, 5, 3 VDC	
Grommet	L plug connector	M plug connector	MN: Without lead wire	DIN terminal	WO: Without connector cable		
G: Lead wire length 300 mm	L: With lead wire (Length 300 mm)	M: With lead wire (Length 300 mm)	MN: Without lead wire	D: With connector	WO: Without connector cable		
H: Lead wire length 600 mm	LN: Without lead wire	LO: Without connector	MO: Without connector	DO: Without connector	W□: With connector cable Note 1)		

- \* LN, MN type: with 2 sockets.
- \* DIN terminal type "Y" which conforms to EN-175301-803C (former DIN43650C) is also available. For details, refer to page 80.
- \* For connector cable of M8 connector, refer to back page 10.

Note 1) Enter the cable length symbols in □. Please be sure to fill in the blank referring to back page 10.