



**The Timken Company**

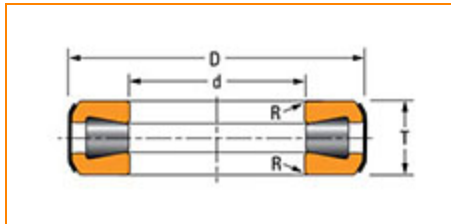
4500 Mt Pleasant St. NW

N. Canton, OH 44720

**Phone:** (234) 262-3000

**E-Mail:** [CustomerCAD@timken.com](mailto:CustomerCAD@timken.com) • **Web site:** [www.timken.com](http://www.timken.com)

Part Number T189W, Thrust Tapered Roller Bearings-Type TTC, TTCS, TTCL



[Specifications](#) | [Dimensions](#) | [Basic Load Ratings](#)

## Specifications

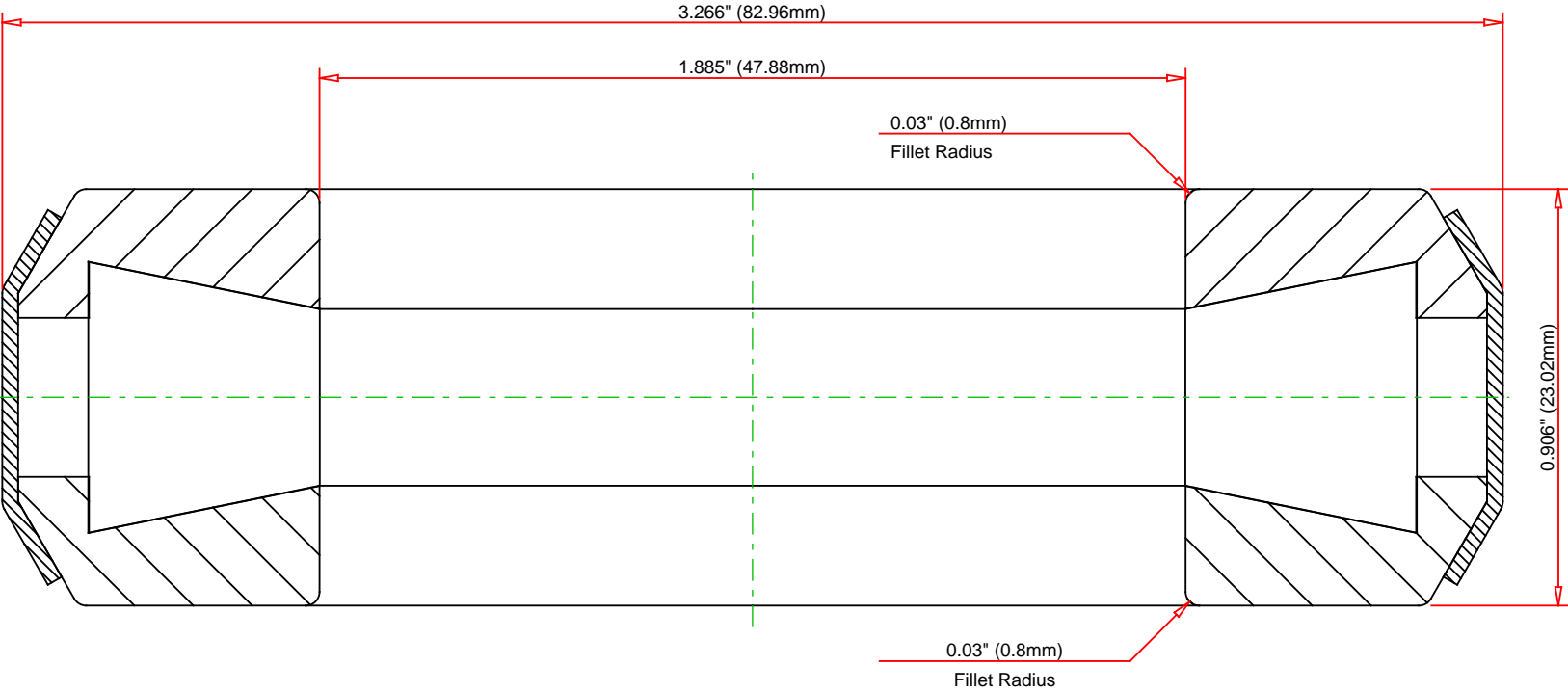
<b>Oil Holes in Retainer</b>	Yes
<b>Weight</b>	1.1 lb 0.5 Kg
<b>Bearing Type</b>	Thrust Tapered Roller Bearings - TTCS

## Dimensions


<b>d - Bore Diameter</b>	1.8850 in 47.879 mm
<b>D - Bearing O.D.</b>	3.2660 in 82.956 mm
<b>T - Bearing Width</b>	0.9063 in 23.020 mm
<b>R - Fillet Radius Shaft (Max)</b>	0.03 in 0.8 mm

## Basic Load Ratings

<b>Steering Pivot Rating</b>	14300 lbf 64000 N
------------------------------	----------------------



IMPERIAL UNITS

	Steering Pivot Rating	14300	lbf	64000	kN		T189W Thrust Tapered Roller Bearings-Type TTC, TTCS, TTCL
	Weight	1.1	lb	0.5	kg		
						THE TIMKEN COMPANY NORTH CANTON, OHIO USA	

Every reasonable effort has been made to ensure the accuracy of the information contained in this writing, but no liability is accepted for errors, omissions or for any other reason.

FOR DISCUSSION ONLY