



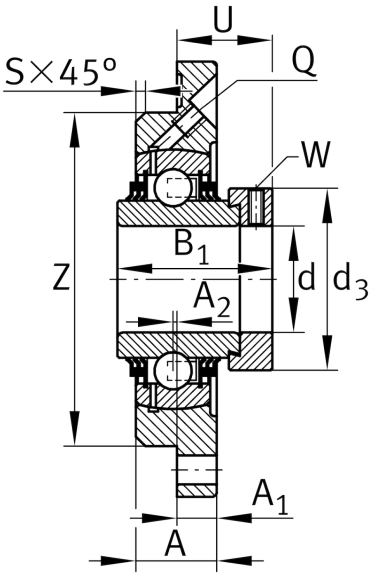
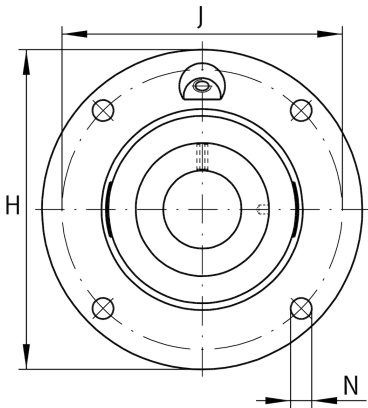
### TME55-XL

Flanged housing unit

Schaeffler ID:  
0009568640000

Housing units TME, four-bolt flanged housing units, cast iron, centring spigot, eccentric locking collar, T seals

Technical information



Main Dimensions & Performance Data

d	55 mm	Bore diameter
H	185 mm	Height flange
B <sub>1</sub>	71.4 mm	Locking collar total width
U	43.6 mm	Total height unit
C <sub>r</sub>	46,000 N	Basic dynamic load rating, radial
C <sub>0r</sub>	29,000 N	Basic static load rating, radial
C <sub>ur</sub>	1,520 N	Fatigue load limit, radial
	3.55 kg	Weight

Dimensions

A	27.5 mm	Height housing
A <sub>1</sub>	15 mm	Thickness of flange
S	3 mm	Chamfer width
Q	M6	Connection thread lubrication

Mounting dimensions

J	150 mm	Distance fixing bore
J	150 mm	Pitch circle diameter (holes)
N	18 mm	Fixing bore
Z	125 mm	Diameter spigot
	h8	Diameter spigot clearance
n	4	Number of screwing holes

Additional information

1	Number of housings
GG.ME11	Housing
GE55-XL-KTT-B	Bearing designation

The datasheet is only an overview of dimensions and basic load ratings of the selected product. Please always observe all further information and guidelines for this product. For further information you can use the contact form on our website.