



The Timken Company

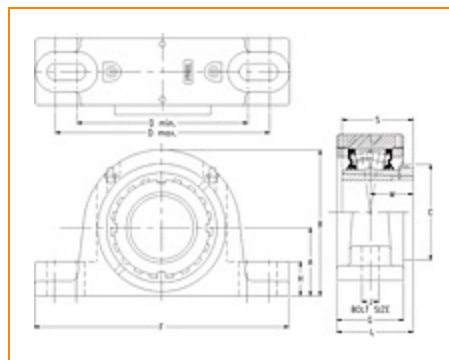
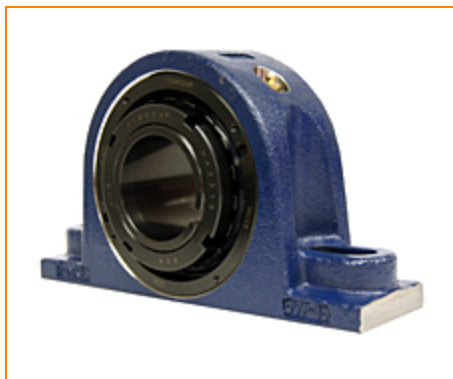
4500 Mt Pleasant St. NW

N. Canton, OH 44720

Phone: (234) 262-3000

E-Mail: CustomerCAD@timken.com • **Web site:** www.timken.com

Part Number TAPN17K075S, Tapered Adapter Two-Bolt Pillow Block



[Specifications](#) | [Dimensions](#) | [Radial and Thrust Factors](#) | [Engineering Seal Speed](#) | [Engineering Bearing Attributes](#) | [Engineering Internal Radial Clearance](#)

Specifications

Engineering Group	Mounted Bearing
Bearing Number	22217
Shaft Size	75 mm
Shaft Size Type	Metric
Full Timken Part Number	TAPN17K075SB TAPN17K075SC TAPN17K075SEB TAPN17K075SEC TAPN17K075SEM TAPN17K075SEN TAPN17K075SEO TAPN17K075SET TAPN17K075SM TAPN17K075SMNG TAPN17K075SN TAPN17K075SO TAPN17K075ST



Locking Style	Tapered Adapter
Housing Construction	Two-Bolt Pillow Block
UPC Code	0883450133029 0883450133036 0883450133050 0883450133067 0883450133074 0883450133081 0883450133098 0883450133104 0883450197342 0883450197557 0883450274852 0883450275057 0883450953825

Dimensions

Dimension A	3.75 in 95.3 mm
Dimension B	7.32 in 185.9 mm
Dimension C	4.33 in 110 mm
Dimension D Min	9.5 in 241.3 mm
Dimension D Max	11 in 279.4 mm
Dimension F	12.63 in 320.8 mm
Dimension G	3 in 76.2 mm
Dimension H	1.33 in 33.8 mm

Dimension J (Bolt Size)	0.75 in 20 mm
Dimension L	3.47 in 88.1 mm
Dimension M	1.96 in 49.8 mm
Dimension S	3.23 in 82 mm

Radial and Thrust Factors

C0 - Static Load	71900 lbf 320000 N
C - Dynamic Load (Basic)	66900 lbf 297000 N
e - Geometry Factor	0.22
Y1 - Geometry Factor	3.07
Y2 - Geometry Factor	4.57

Engineering Seal Speed

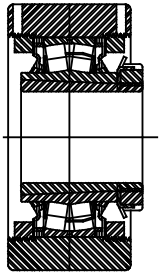
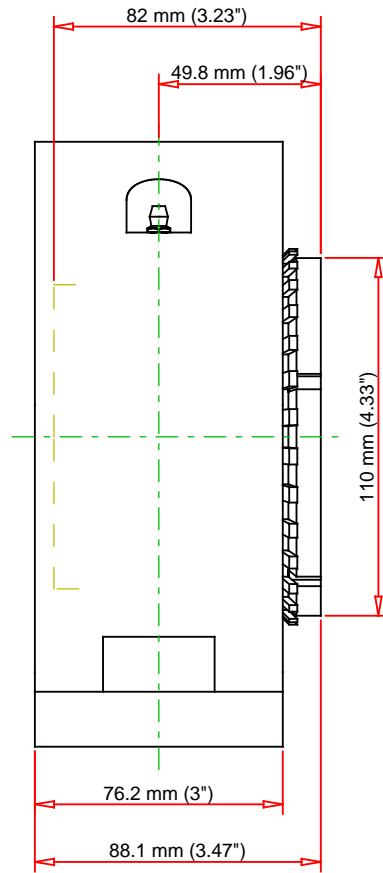
Oil Lubrication - M/N Seal	1400 rpm
Oil Lubrication - T Seal	2400 rpm
Oil Lubrication - B/C/O Seal	1100 rpm
Grease Lubrication - M/N Seal	1400 rpm
Grease Lubrication - T Seal	2000 rpm
Grease Lubrication - B/C/O Seal	1100 rpm

Engineering Bearing Attributes

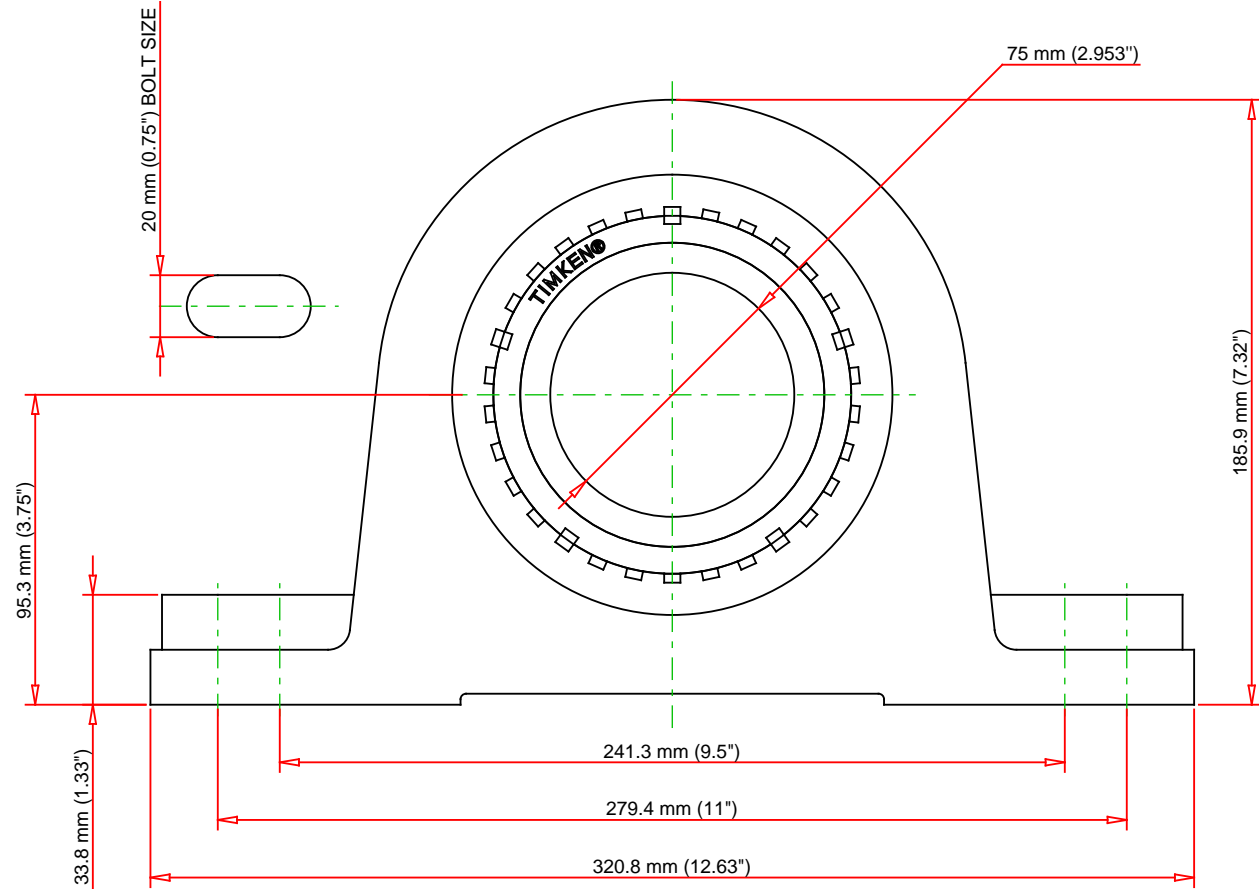
Float	0.083 in 2.108 mm
Shaft Tolerance	0.0040 in 0.102 mm

Engineering Internal Radial Clearance

Eng Internal Radial Clearance - Min	0.0043
Eng Internal Radial Clearance - Max	0.0055
Pre Install Clearance Min	0.0043 in 0.110 mm
Pre Install Clearance Max	0.0055 in 0.140 mm



Note: Section View not to Scale



C - Dynamic Load	66900	lbf	297000	N
C0 - Static Load	71900	lbf	320000	N
Weight	33	lb	15	kg
Max. Speed T-Seals & Grease	2000	rpm		
Rad. Clearance - Max.	0.0055			

TIMKEN

THE TIMKEN COMPANY
NORTH CANTON, OHIO USA

TAPN17K075S

Tapered Adapter Two-Bolt Pillow
Block

Every reasonable effort has been made to ensure the accuracy of the information contained in this writing, but no liability is accepted for errors, omissions or for any other reason.

FOR DISCUSSION ONLY