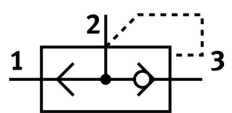
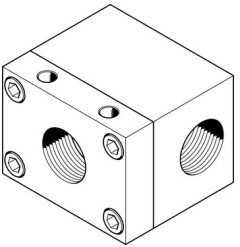


# Quick exhaust valve

## SE-3/4

Part number: 2280



### Data sheet

[General operating condition](#)

Feature	Value
Valve function	Quick exhaust
Pneumatic connection, port 1	G3/4
Pneumatic connection, port 2	G3/4
Type of mounting	With through-hole
Standard nominal flow rate, exhaust 0.6-0.5 MPa (6-5 bar, 87-72.5 psi)	7500 l/min
Standard nominal flow rate, air flow 0.6-0.5 MPa (6-5 bar, 87-72.5 psi)	2500 l/min
Operating pressure	0.5 bar ... 10 bar
Ambient temperature	-20 °C ... 75 °C
Material housing	Wrought aluminium alloy Anodised
Operating medium	Compressed air to ISO 8573-1:2010 [7:4:4]
Nominal size	19 mm
Mounting position	optional
Symbol	00991459
Note on operating and pilot medium	Lubricated operation possible (in which case lubricated operation will always be required)
LABS (PWIS) conformity	VDMA24364-B1/B2-L
Media temperature	-20 °C ... 75 °C
Product weight	710 g
Pneumatic connection, port 3	G3/4
Note on materials	RoHS-compliant
Material seals	NBR