



The Timken Company

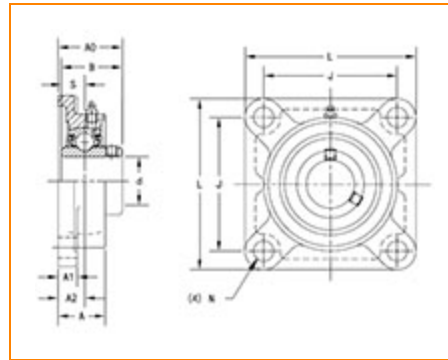
4500 Mt Pleasant St. NW

N. Canton, OH 44720

Phone: (234) 262-3000

E-Mail: CustomerCAD@timken.com • **Web site:** www.timken.com

Part Number UCF315, UCF 300 Four-Bolt Flanged Mounted Bearings - Set Screw Locking



[Specifications](#) | [Dimensions](#) | [Basic Load Ratings](#)

Specifications

Bearing Number	UC315
Shaft Size d	75 mm
Locking Style	Set Screw Locking
Housing Construction	Four-Bolt Square Flange

Dimensions

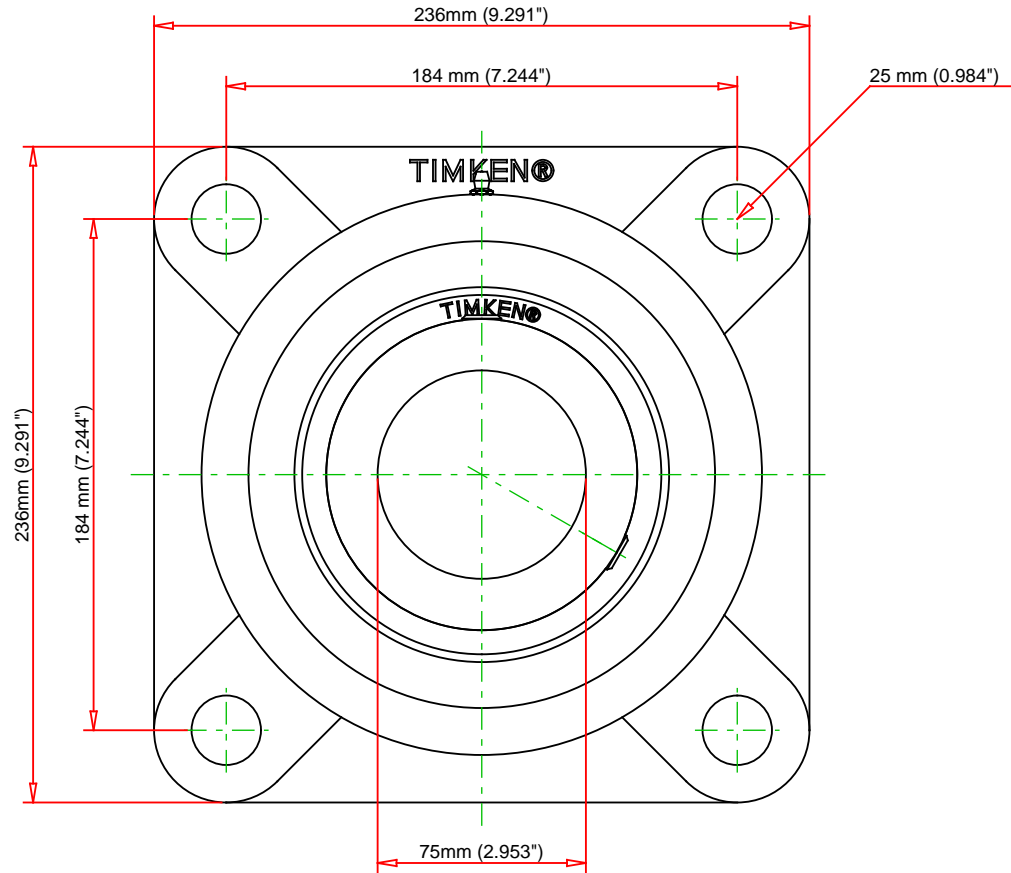
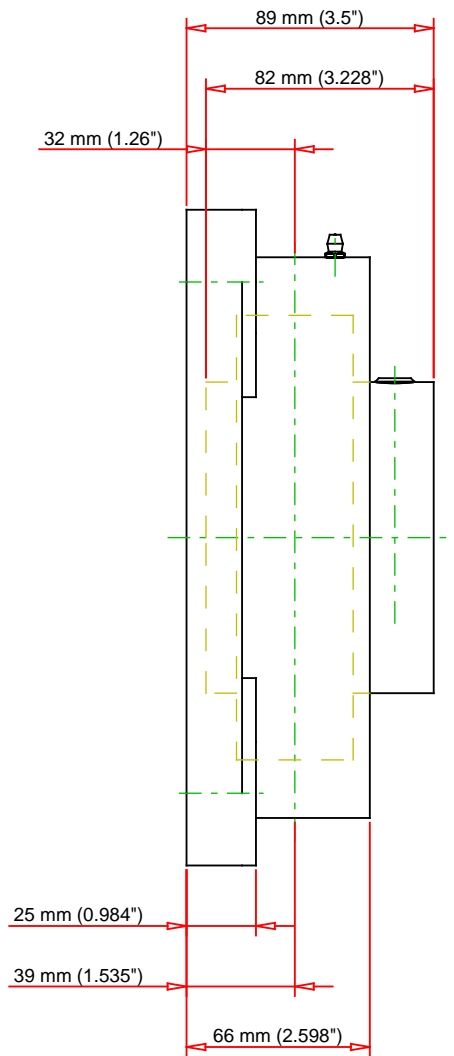
Total Length L	236 mm 9.291 in
Housing Width A	66 mm 2.598 in
Bolt Hole Spacing J	184 mm 7.244 in



Bolt Hole Size N	25 mm 0.984 in
Flange Thickness A1	25 mm 0.984 in
Center of Bearing from Housing End A2	39 mm 1.535 in
Inner Ring Width B	82 mm 3.228 in
Center of Bearing from Bearing End S	32 mm 1.260 in
Dimension A0	89 mm 3.5 in
Bolt Size	M22
Grease Nipple Size	A-R1/8

Basic Load Ratings

Static Load Rating	77200 N 17355 lbf
Dynamic Load Rating	113000 N 25404 lbf



Bearing Number	UC315			
Load Ratings - C _r	25404	lbf	113000	N
Load Ratings - C _{0r}	17355	lbf	77200	N
Weight	25.6	lb	11.6	kg
Bolt Size	M22			

TIMKEN

THE TIMKEN COMPANY
NORTH CANTON, OHIO USA

UCF315
UCF 300 Four-Bolt Flanged Mounted
Bearings - Set Screw Locking

Every reasonable effort has been made to ensure the accuracy of the information contained in this writing, but no liability is accepted for errors, omissions or for any other reason.

FOR DISCUSSION ONLY