



**The Timken Company**

4500 Mt Pleasant St. NW

N. Canton, OH 44720

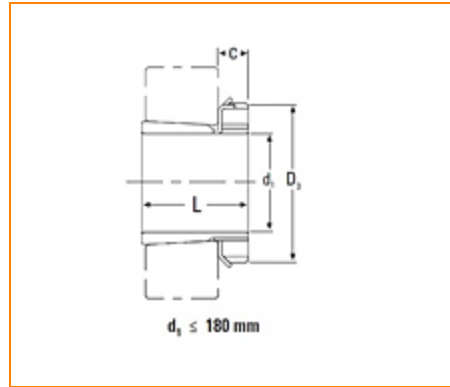
**Phone:** (234) 262-3000

**E-Mail:** [CustomerCAD@timken.com](mailto:CustomerCAD@timken.com) • **Web site:** [www.timken.com](http://www.timken.com)

## Part Number H2318, Metric H Adapter Sleeve

- Safe and effective tapered bore bearing assembly.
- Includes mounting sleeve, locknut and lockwasher or lockplate.
- Other dimensions may be available, consult your Timken sales representative.

\* Adapters with a C1 dimension use a lockplate as the locking device as shown in the illustration; otherwise, a lockwasher is used as the locking device.

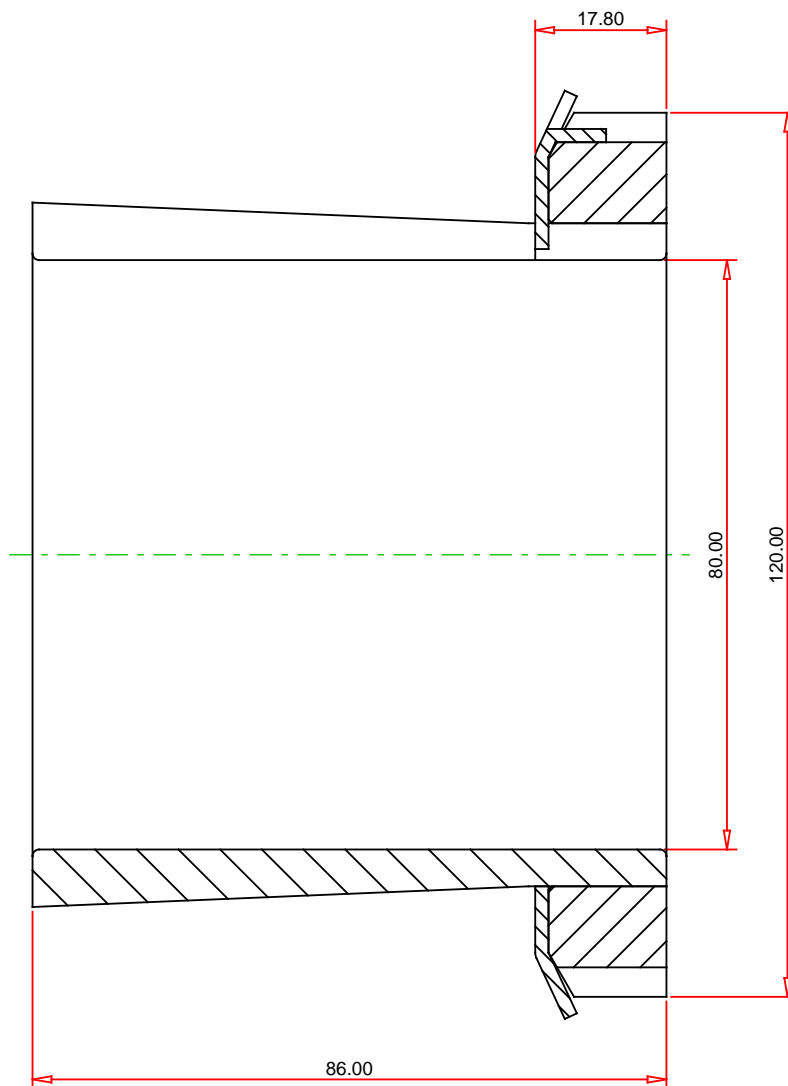


### Specifications

$d_1$	80.00 mm
L	86.00 mm
C	18 mm
Thread G	M90x2
$D_3$	120 mm
Weight	1.69 Kg
Locknut	KM18
Lockwasher and Lockplates	MB18

Appropriate Hydraulic Nut

HMV18



METRIC UNITS

**TIMKEN®**

**THE TIMKEN COMPANY**  
NORTH CANTON, OHIO USA

**H2318**  
Metric H Adapter Sleeve

Every reasonable effort has been made to ensure the accuracy of the information contained in this writing, but no liability is accepted for errors, omissions or for any other reason.

**FOR DISCUSSION ONLY**