

Reed Auto Switch Band Mounting Style D-B53/D-B54/D-B64



Refer to SMC website for the details of the products conforming to the international standards.

Auto Switch Specifications

PLC: Programmable Logic Controller

D-B5 (With indicator light)				
Auto switch model	D-B53	D-B54		
Applicable load	PLC	Relay, PLC		
Load voltage	24 VDC	24 VDC	100 VAC	200 VAC
Load current range ⁽³⁾	5 to 50 mA	5 to 50 mA	5 to 25 mA	5 to 12.5 mA
Contact protection circuit	None	Built-in		
Internal voltage drop	2.4 V or less	2.4 V or less (to 20 mA)/3.5 V or less (to 50 mA)		
Indicator light	Red LED illuminates when turned ON.			
Standard	CE marking			
D-B6 (Without indicator light)				
Auto switch model	D-B64			
Applicable load	Relay, PLC			
Load voltage	24 V ^{AC} _{DC} or less	100 VAC		200 VAC
Max. load current	Max. 50 mA	Max. 25 mA		Max. 12.5 mA
Contact protection circuit	Built-in			
Internal resistance	25 Ω or less			
Standard	CE marking			

• Lead wires — Oilproof heavy-duty vinyl cord, ø4, 0.3 mm², 2 cores (Brown, Blue), 0.5 m

Note 1) Refer to page 1272 for reed auto switch common specifications.

Note 2) Refer to page 1272 for lead wire lengths.

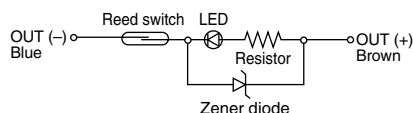
Note 3) Under 5 mA, the strength of the indicator light is poor. In some cases, visibility of the indicator light will not be possible where the output signal is less than 2.5 mA. However, there is no problem in terms of contact output, when an output signal exceeds 1 mA or more.

Grommet

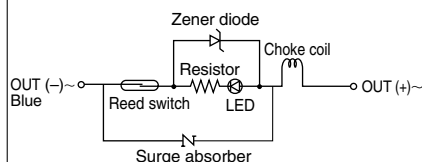


Auto Switch Internal Circuit

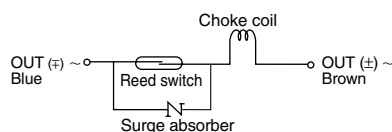
D-B53



D-B54



D-B64



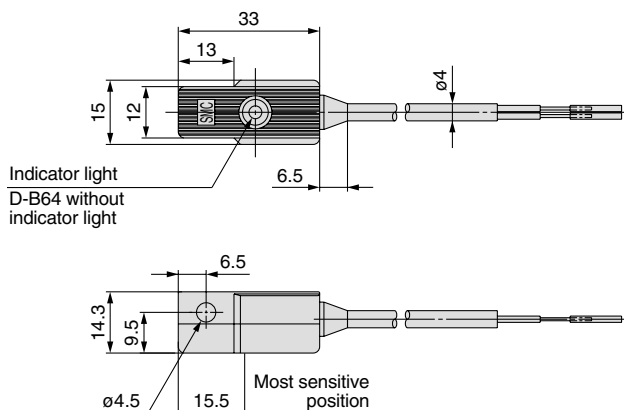
Mass

(g)

Auto switch model		D-B53	D-B54	D-B64
Lead wire length (m)	0.5	22	22	22
	3	78	78	78
	5	126	126	—

Dimensions

(mm)



D-□