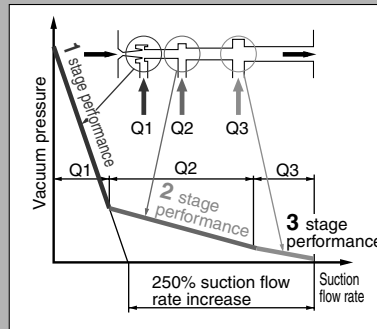


Multistage Ejector

Series ZL112-212

Energy-saving, large flow rate, 3 stage diffuser construction

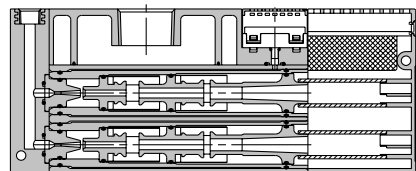
Suction flow rate increased 250% and air consumption reduced 20% with 3 stage diffuser construction
(Versus ø1.3, one stage model)



	Suction flow rate (ℓ/min (ANR))	Air consumption (ℓ/min (ANR))
ZL112	100	63
ZL212	200	126

Series ZL212

Diffusers stacked and integrated
Compact size and large flow rate
(Twice the flow rate of the ZL112)



Vacuum pressure sensor

With adaptor for vacuum

With vacuum pressure gauge

Digital vacuum pressure switch

ZSE30A

With One-touch fittings
Makes piping work easy (ZL112 only)

Exhaust port

Built-in silencer

Port exhaust

Rated pressure range: 0.0 to -101.0 kPa

3-step setting

1

Push

2

Adjust to set-value with Δ ∇ buttons.

3

Push

Finish setting

Power-saving function
Power consumption is reduced by turning off the monitor. (Reduce power consumption by up to 20%.)

* For series ZSE30A, refer to the separate catalog (CAT.ES100-70) for details.

Series Variations

Series	Maximum suction flow rate (ℓ/min (ANR))	Air consumption (ℓ/min (ANR))	Vacuum pressure sensor option					
			Exhaust port		With valve		With digital vacuum pressure switch ZSE30A	Vacuum pressure gauge
			Built-in silencer	Port exhaust	With supply and release valves	With supply valve		Vacuum adaptor
ZL112	100	63	●	●	●	●	●	●
ZL212	200	126	●	●			●	●

Multistage Ejector

Series ZL112

How to Order

Without valve ZL1 12

With valve ZL1 12 - K1 5 M Z -

Nozzle diameter

12	1.2 mm
----	--------

Exhaust type

Nil	Built-in silencer
P	Port exhaust

Exhaust port (EXH) thread type (Port exhaust only)

Nil	Rc1/2
F	G1/2 ⁽³⁾
N	1/2-14 NPT
T	1/2-14 NPTF

Note 3) The thread ridge shape is conforming to G thread standard (JIS B0203), but other shapes are not conforming to ISO16030 and ISO1179.

Supply valve/Release valve combination

K1	With supply and release valves
K2	With supply valve

Rated voltage

DC specifications	
5	24V
6	12V
V	6V
S	5V
R	3V
AC specifications (50/60 Hz)	
1	100V
2	200V
3	110V[115V]
4	220V[230V]

Electrical entry

G	Grommet	Lead wire length 0.3 m
H		Lead wire length 0.6 m
L	L plug connector	Lead wire length 0.3 m
LN		Without lead wires
LO	M plug connector	Without connector
M		Lead wire length 0.3 m
MN	MO	Without lead wires
MO		Without connector

Light/Surge voltage suppressor

Nil	Without light/surge voltage suppressor
S	With surge voltage suppressor
Z	With light/surge voltage suppressor
U	With light/surge voltage suppressor (Non-polar type)

* Type U is 24 or 12 VDC only.
* Since surge voltage is prevented by a rectifier in the case of AC, there is no type "S".

Manual override

Nil	Non-locking push type
D	Locking slotted type

Lead wire specifications
(Applicable only when the vacuum pressure sensor specification is "D" for digital pressure switch for vacuum)

L	Lead wire with connector (Length 2 m)
---	---------------------------------------

Unit specifications
(Applicable only when the vacuum pressure sensor specification is "D" for digital pressure switch for vacuum)

Nil	With unit switching function
M	SI unit only
P	With unit switching function (Initial value psi)

Note 1) W/ unit switching function is not permitted to sell for the domestic use in Japan, because the new Weight and Measure Act has been implemented since October '99.
Note 2) Fixed unit: kPa

Output specifications
(Applicable only when the vacuum pressure sensor specification is "D" for digital pressure switch for vacuum)

N	NPN open collector 1 output
P	PNP open collector 1 output
A	NPN open collector 2 outputs
B	PNP open collector 2 outputs
C	NPN open collector 1 output + Analog voltage output
D	NPN open collector 1 output + Analog current output
E	PNP open collector 1 output + Analog voltage output
F	PNP open collector 1 output + Analog current output

Vacuum pressure sensor

Nil	None
GN	Vacuum port adaptor Rc 1/8
G	Vacuum pressure gauge
D	Digital pressure switch for vacuum

Standard

With valve

With vacuum pressure gauge

Adapter

Port exhaust

Ejector Specifications

Model	ZL112
Nozzle diameter	1.2 mm
Maximum suction flow rate	100 ℓ/min (ANR)
Air consumption	63 ℓ/min (ANR)
Maximum vacuum pressure	−84 kPa
Maximum operating pressure	0.7 MPa
Supply pressure range	0.2 to 0.5 MPa
Standard supply pressure	0.4 MPa
Operating temperature range	5 to 50°C

Supply/Release Valve Specifications

Part no.	SYJ514-□□□-S
Type of valve actuation	N.C.
Fluid	Air
Operating pressure range	Internal pilot type
	0.2 to 0.5 MPa
Ambient and fluid temperature	5 to 50°C
Response time (For 0.5 MPa) ⁽¹⁾	25 ms or less
Maximum operating frequency	5 Hz
Manual override	Non-locking push type/Locking slotted type
Pilot exhaust type	Pilot valve individual exhaust, Main valve/Pilot valve common exhaust
Lubrication	Not required
Mounting position	Unrestricted
Impact/Vibration resistance ⁽²⁾	150/30 m/s ²
Enclosure	Dust proof

Note 1) Based on JIS B 8374-1981 dynamic performance test. (coil temperature 20°C, at rated voltage, without surge voltage suppressor)

Note 2) Impact resistance: No malfunction when tested with a drop tester in the axial direction and at a right angle to the main valve and armature, one time each in both energized and deenergized states. (initial value)

Vibration resistance: No malfunction when tested with one sweep of 45 to 2000 Hz in the axial direction and at a right angle to the main valve and armature, one time each in both energized and deenergized states. (initial value)

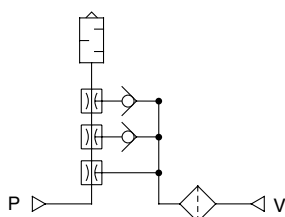
Note 3) Refer to "Best Pneumatics No. 1" for details on valves.

Option Specifications
Vacuum Pressure Gauge Specifications

Part no.	GZ30S
Fluid	Air
Pressure range	−100 to 100 kPa
Scale range (Angular)	230°
Accuracy	±3% F.S. (Full span)
Class	Class 3
Operating temperature range	0 to 50°C
Material	Housing: Polycarbonate/ABS resin

JIS Symbol

Standard


Mass

ZL112 (Basic)	450 g
Port exhaust	+110 g
Digital pressure switch for vacuum (Excluding lead wire)	+43 g
Digital pressure switch for vacuum (Including 3 cores lead wire)	+81 g
Digital pressure switch for vacuum (Including 4 cores lead wire)	+85 g
Valve (per 1 pc.)	+45 g

ZA
ZX
ZR
ZM
ZMA
ZQ
ZH
ZU
ZL
ZY□
ZF□
ZP□
SP
ZCUK
AMJ
AMV
AEP
HEP

Related
Equipment