

40021203. - cubio cupboard

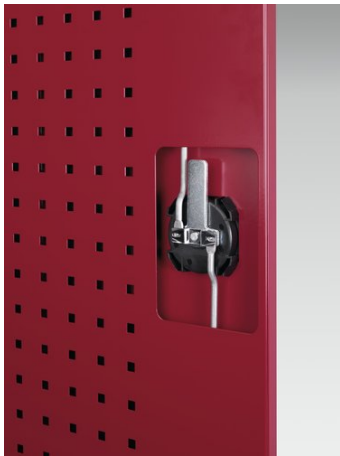
Short Description

cubio cupboard with perfo doors, 1 shelf, 3 drawers

WxDxH: 1050x650x1000mm

Product Images





Additional Information

Description	cubio kitted cupboard. Featuring a heavy duty, reinforced steel housing with up to 1 tonne total capacity with double, perfo panel lined, reinforced high doors with 1 adjustable height, galvanised steel shelf (100kg U.D.L.), 3x 125mm drawers with 100% extension slides (75kg U.D.L.). Finished in durable powder coat paint. WxDxH: 1050x650x1000mm.
Width	1050
Depth	650
Height	1000
Customs tariff number	94032080
Product material	Sheet steel
Product surface	Powder coated
Drawer type	Internal
Drawer height 1	125mm
Drawer 1 Internal Dimensions	925mm x 525mm x 105mm
Drawer height 2	125mm
Drawer 2 Internal Dimensions	925mm x 525mm x 105mm
Drawer height 3	125mm
Drawer 3 Internal Dimensions	925mm x 525mm x 105mm
Drawer height 12	100mm
Drawer 12 Internal Dimensions	925mm x 525mm x 80mm
Door type	Perfo
Door height 1	825 mm
Number of shelves	1
Shelf Material	Steel
Shelf Load Capacity	100kg

Product Options

Colour:	Anthracite grey
	Crimson red
	Gentian blue
	Light grey