



**The Timken Company**

4500 Mt Pleasant St. NW

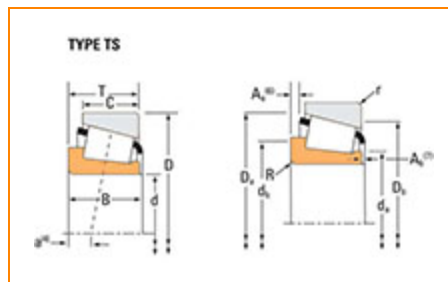
N. Canton, OH 44720

**Phone:** (234) 262-3000

**E-Mail:** [CustomerCAD@timken.com](mailto:CustomerCAD@timken.com) • **Web site:** [www.timken.com](http://www.timken.com)

## Part Number 5356, Tapered Roller Bearings - Single Cones - Imperial

This is the most basic and most widely used type of tapered roller bearing. It consists of two main separable parts: the cone (inner ring) assembly and the cup (outer ring). It is typically mounted in opposing pairs on a shaft.



[Specifications](#) | [Dimensions](#) | [Abutment and Fillet Dimensions](#) | [Basic Load Ratings](#) | [Factors](#)

### Specifications

|   |                       |
|---|-----------------------|
| <b>Cone Part Number</b>   | 5356                  |
| <b>Design Units</b>   | Imperial              |
| <b>Cage Type</b>  | Stamped Steel         |
| <b>C1 - Dynamic Radial Rating<br/>(Two-Row, 1 million<br/>revolutions)<sup>1</sup></b>      | 83100 lbf<br>370000 N |
| <b>C90(2) - Dynamic Radial Rating<br/>(Two-Row, 90 million<br/>revolutions)<sup>2</sup></b> | 21500 lbf<br>95800 N  |

### Dimensions



|                       |                        |
|-----------------------|------------------------|
| <b>d - Cone Bore</b>  | 1 3/4 in<br>44.450 mm  |
| <b>B - Cone Width</b> | 1.7510 in<br>44.475 mm |

## Abutment and Fillet Dimensions

|  |                     |
|--|---------------------|
| <b>R - Cone Backface "To Clear" Radius<sup>3</sup></b> | 0.05 in<br>1.270 mm |
| <b>da - Cone Frontface Backing Diameter</b>            | 2.2 in<br>56 mm     |
| <b>db - Cone Backface Backing Diameter</b>             | 2.28 in<br>58 mm    |
| <b>Ab - Cage-Cone Frontface Clearance</b>              | 0.07 in<br>1.8 mm   |
| <b>Aa - Cage-Cone Backface Clearance</b>               | 0.08 in<br>2 mm     |
| <b>a - Effective Center Location<sup>4</sup></b>       | -0.63 in<br>-16 mm  |

## Basic Load Ratings

|   |                       |
|---|-----------------------|
| <b>C90 - Dynamic Radial Rating (90 million revolutions)<sup>5</sup></b>             | 12400 lbf<br>55000 N  |
| <b>C1 - Dynamic Radial Rating (1 million revolutions)<sup>6</sup></b>               | 47700 lbf<br>212000 N |
| <b>C0 - Static Radial Rating</b>  | 60100 lbf<br>267000 N |
| <b>C<sub>a90</sub> - Dynamic Thrust Rating (90 million revolutions)<sup>7</sup></b> | 6280 lbf<br>27900 N   |

## Factors

|   |        |
|---|--------|
| <b>K - Factor<sup>8</sup></b>                           | 1.97   |
| <b>G1 - Heat Generation Factor<br/>(Roller-Raceway)</b> | 73.4   |
| <b>G2 - Heat Generation Factor<br/>(Rib-Roller End)</b> | 15.5   |
| <b>Cg - Geometry Factor<sup>9</sup></b>                 | 0.0985 |

<sup>1</sup> Based on  $1 \times 10^6$  revolutions  $L_{10}$  life, for the ISO life calculation method.

<sup>2</sup> Based on  $90 \times 10^6$  revolutions  $L_{10}$  life, for The Timken Company life calculation method.  $C_{90}$  and  $C_{a90}$  are radial and thrust values for a single-row,  $C_{90(2)}$  is the two-row radial value.

<sup>3</sup> These maximum fillet radii will be cleared by the bearing corners.

<sup>4</sup> Negative value indicates effective center inside cone backface.

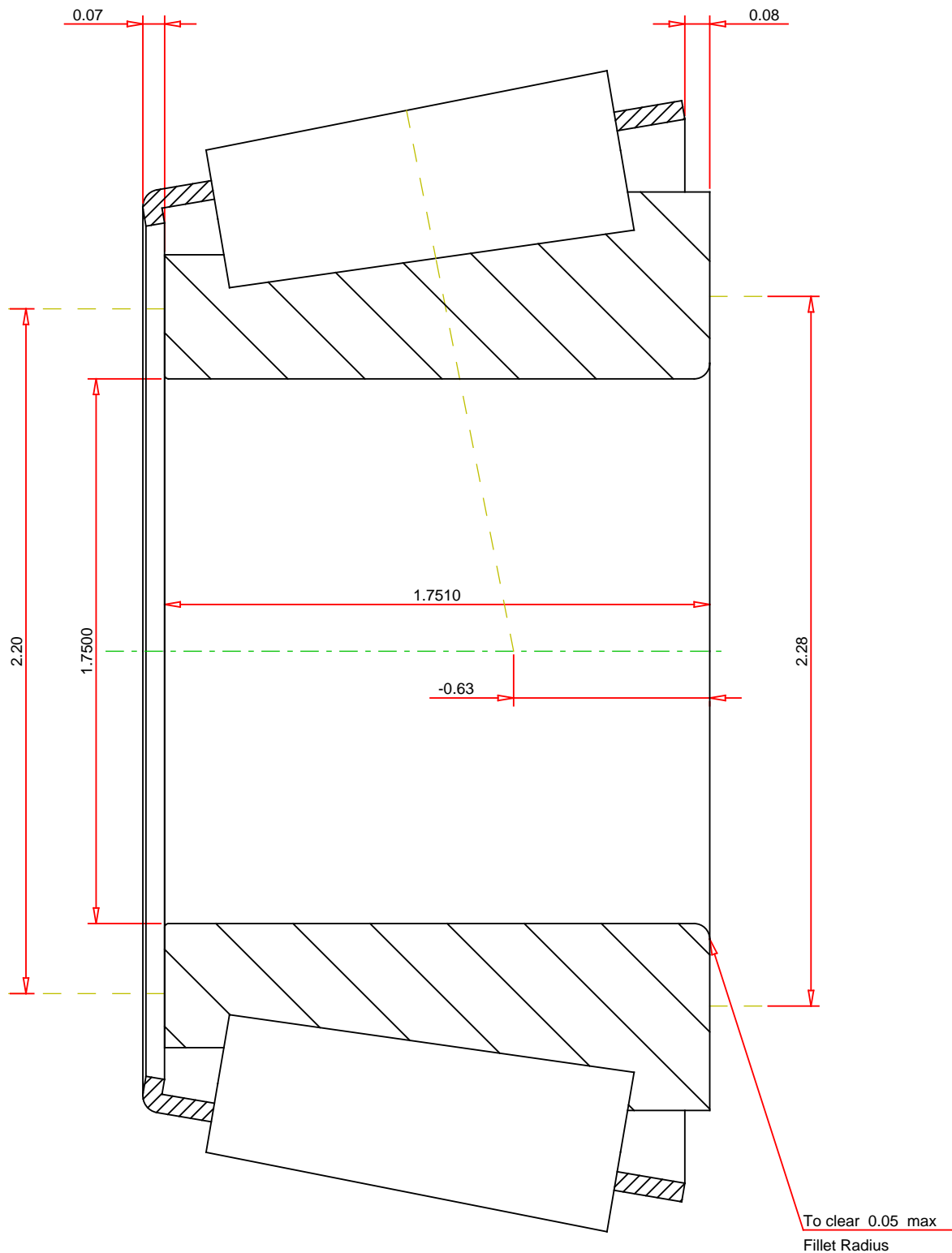
<sup>5</sup> Based on  $90 \times 10^6$  revolutions  $L_{10}$  life, for The Timken Company life calculation method.  $C_{90}$  and  $C_{a90}$  are radial and thrust values.

<sup>6</sup> Based on  $1 \times 10^6$  revolutions  $L_{10}$  life, for the ISO life calculation method.

<sup>7</sup> Based on  $90 \times 10^6$  revolutions  $L_{10}$  life, for The Timken Company life calculation method.  $C_{90}$  and  $C_{a90}$  are radial and thrust values for a single-row,  $C_{90(2)}$  is the two-row radial value.

<sup>8</sup> These factors apply for both inch and metric calculations. Consult your Timken representative for instruction on use.

<sup>9</sup> Geometry constant for Lubrication Life Adjustment Factor  $a_3$ .



IMPERIAL UNITS

|  |  |  |
|--|--|--|
| <div>Number of Rollers Per Row16</div> | <div><div>TIMIKEN®</div><div>THE TIMKEN COMPANY</div><div>NORTH CANTON, OHIO USA</div></div> | <div><div>5356</div><div>Tapered Roller Bearings - Single Cones - Imperial</div></div> <div><div><div>K Factor</div><div>Dynamic Radial Rating - C90</div><div>Dynamic Thrust Rating - Ca90</div><div>Dynamic Radial Rating - C1</div></div><div><div>1.97</div><div>55000</div><div>27900</div><div>212000</div></div><div><div>lbf</div><div>lbf</div><div>lbf</div><div>lbf</div></div></div> |
|--|--|--|