



The Timken Company

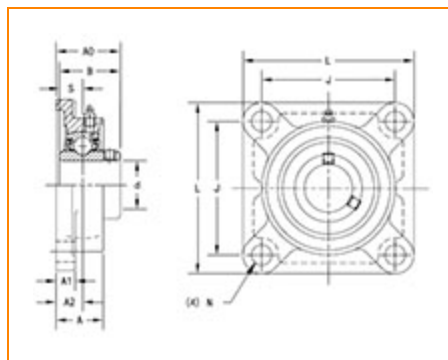
4500 Mt Pleasant St. NW

N. Canton, OH 44720

Phone: (234) 262-3000

E-Mail: CustomerCAD@timken.com • **Web site:** www.timken.com

Part Number UCF312, UCF 300 Four-Bolt Flanged Mounted Bearings - Set Screw Locking



[Specifications](#) | [Dimensions](#) | [Basic Load Ratings](#)

Specifications

Bearing Number	UC312
Shaft Size d	60 mm
Locking Style	Set Screw Locking
Housing Construction	Four-Bolt Square Flange

Dimensions

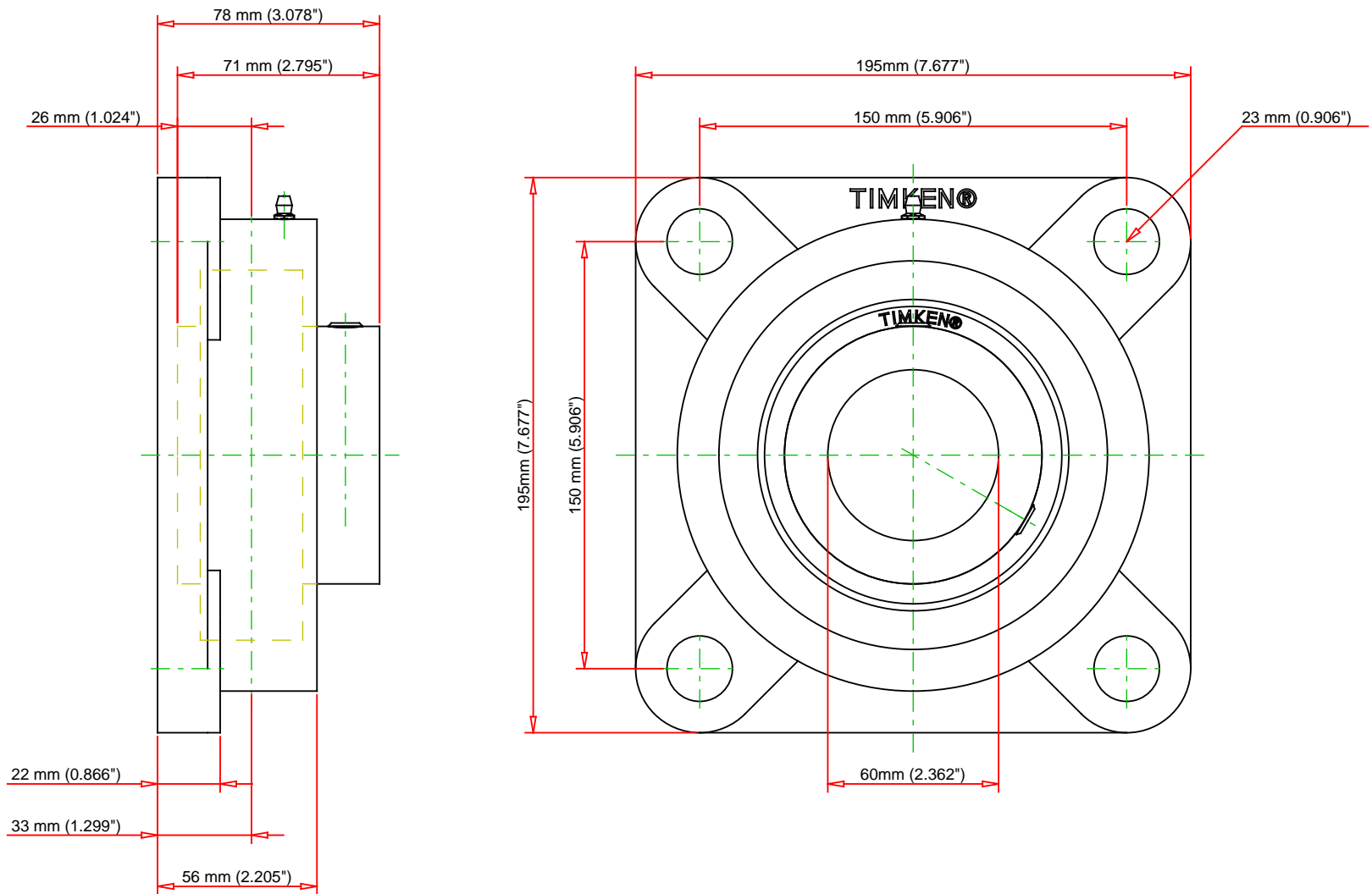
Total Length L	195 mm 7.677 in
Housing Width A	56 mm 2.205 in
Bolt Hole Spacing J	150 mm 5.906 in



Bolt Hole Size N	23 mm 0.906 in
Flange Thickness A1	22 mm 0.866 in
Center of Bearing from Housing End A2	33 mm 1.299 in
Inner Ring Width B	71 mm 2.795 in
Center of Bearing from Bearing End S	26 mm 1.024 in
Dimension A0	78 mm 3.078 in
Bolt Size	M20
Grease Nipple Size	A-R1/8

Basic Load Ratings

Static Load Rating	52200 N 11735 lbf
Dynamic Load Rating	81900 N 18412 lbf



Bearing Number	UC312			
Load Ratings - C _r	18412	lbf	81900	N
Load Ratings - C _{0r}	11735	lbf	52200	N
Weight	15.2	lb	6.9	kg
Bolt Size	M20			

TIMKEN

THE TIMKEN COMPANY
NORTH CANTON, OHIO USA

UCF312

UCF 300 Four-Bolt Flanged Mounted
Bearings - Set Screw Locking

Every reasonable effort has been made to ensure the accuracy of the information contained in this writing, but no liability is accepted for errors, omissions or for any other reason.

FOR DISCUSSION ONLY