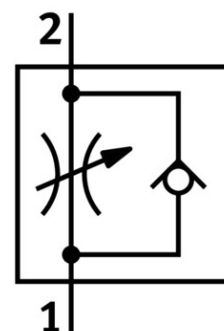


# One-way flow control valve GR-QB-1/2-U

Part number: 534685

FESTO



[PDF](#) General operating condition

## Data sheet

Feature	Value
Valve function	One-way flow control function
Pneumatic connection, port 1	QB-1/2
Pneumatic connection, port 2	QB-1/2
Type of actuation	Manual
Adjustment component	Slotted head screw
Type of mounting	Either: In-line installation With through-hole
Standard nominal flow rate in flow control direction	1779.66 l/min
Standard nominal flow rate in blocked direction	1372.881 l/min ... 1614.407 l/min
Operating pressure	-0.951 bar ... 7.998 bar
Ambient temperature	0 °C ... 60 °C
Material housing	PBT-reinforced
Mounting position	optional
Symbol	00991453
Standard flow rate in flow control direction 0.6->0 MPa (6->0 bar, 87->0 psi)	2949.2 l/min
Standard flow rate in non-return direction 0.6->0 MPa (6->0 bar, 87->0 psi)	2110.169 l/min ... 2567.797 l/min
Operating medium	Compressed air to ISO 8573-1:2010 [7:4:4]
Note on operating and pilot medium	Lubricated operation possible (in which case lubricated operation will always be required)
LABS (PWIS) conformity	VDMA24364 zone III
Media temperature	0 °C ... 60 °C
Product weight	119.07 g
Material screwed plug	Brass Nickel-plated
Note on materials	RoHS-compliant
Material seals	NBR
Material release ring	POM

Feature	Value
Material knurled head	Brass Nickel-plated
Material adjusting screw	Brass Nickel-plated