

40021201. - cubio cupboard

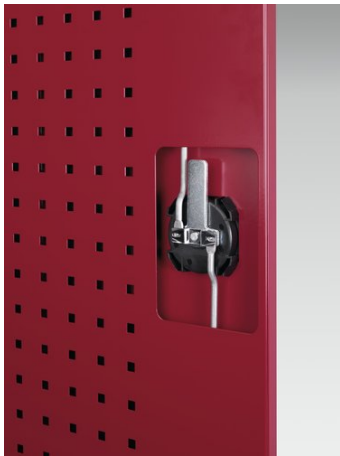
Short Description

cubio cupboard with perfo doors, 2 shelves, 1 drawer

WxDxH: 1050x650x1000mm

Product Images





Additional Information

| | |
|------------------------------|---|
| Description | cubio kitted cupboard. Featuring a heavy duty, reinforced steel housing with up to 1 tonne total capacity with double, perfo panel lined, reinforced high doors with 2 adjustable height, galvanised steel shelves (100kg U.D.L.), 1x 125mm drawer with 100% extension slides (75kg U.D.L.). Finished in durable powder coat paint. WxDxH: 1050x650x1000mm. |
| Width | 1050 |
| Depth | 650 |
| Height | 1000 |
| Customs tariff number | 94032080 |
| Product material | Sheet steel |
| Product surface | Powder coated |
| Drawer type | Internal |
| Drawer height 1 | 125mm |
| Drawer 1 Internal Dimensions | 925mm x 525mm x 105mm |
| Door type | Perfo |
| Number of shelves | 2 |

Product Options

| | |
|---------|-----------------|
| Colour: | Anthracite grey |
| | Crimson red |
| | Gentian blue |
| | Light grey |