



TS

TAPERED ROLLER BEARINGS

- TS style is the most widely used tapered roller bearing.
- Part numbers give specifiers the widest possible choice from the comprehensive range of metric (ISO and 'J' prefix) and inch-sizes available from The Timken Company.
- Consult your Timken representative before making a final bearing selection to ensure suitability, availability and the most cost-effective application.
- To place an order or obtain a quotation, specify the inner and outer part numbers.

Example: inner race outer race
 JH211749 - JH211710

- In most ISO bearings, only one bearing number is specified for both races:

Example: **32310**

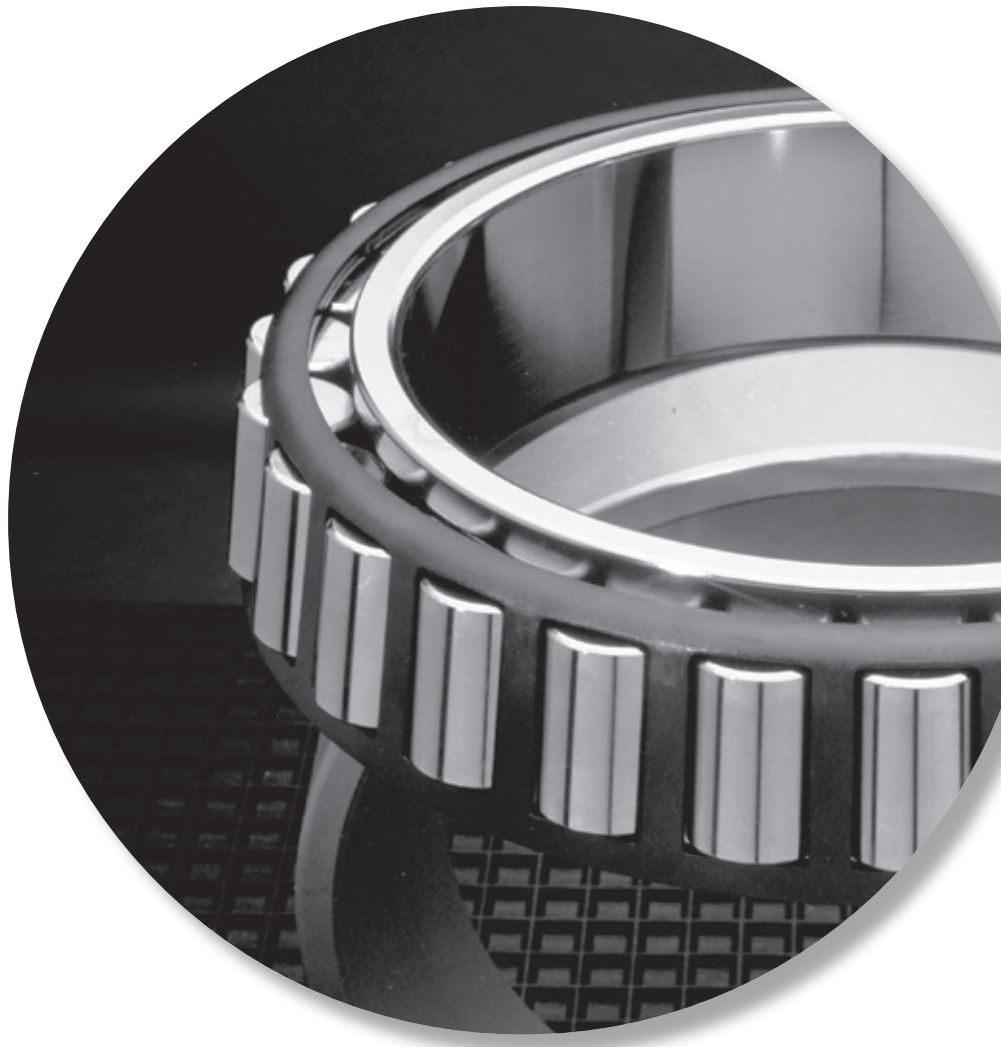
Conforms to the ISO 355 standard.

BEARING DATA TABLES

In the following bearing data tables, part numbers are listed in ascending order of bore, outside diameter and width.

Bearing ratings shown in tables are based on environmental reference conditions. Effects of known operating conditions on bearing performance in an application should be investigated before final bearing selection is made.

Approximate mass is listed for every part number. For weight-critical applications or exact freight cost evaluation purposes, a more accurate value should be obtained from your Timken representative.



B

