

# ISO Cylinder: Standard/Non-rotating Type Double Acting, Single/Double Rod

## Series C85

ø8, ø10, ø12, ø16, ø20, ø25

### How to Order

<b>Double acting Single rod</b>	<b>C D 85</b>	<b>K N 16 40 C J A R2</b>
<b>Double acting Double rod</b>	<b>C D 85 W</b>	<b>E 16 40 C JJ B</b>

**Built-in magnet**

Nil	None
D	Built-in magnet

**Type**

Nil	Standard
K	Non-rotating rod (Rubber cushion only)

**Mounting style**

Symbol	Mounting
N	Basic integrated clevis
E**	Double end
F**	Front nose
Y**	Front nose in line port

\* Double acting, Double rod:  
Only double end style (E).  
\*\* Except air cushion type.

**Bore size**

Bore size (mm)	Standard stroke (mm)**	Max. stroke (mm)		
		Standard	Non-rotating	Double rod
8*	10, 25, 40, 50, 80, 100	400	100	100
10				
12				
16	10, 25, 40, 50, 80, 100, 125, 160, 200	1000	1000	500
20				
25				

\* Not available with air cushion.  
\*\* Other strokes available on request.

**Stroke**

**Cushion**

Nil	Rubber cushion (Standard)
C	Air cushion (Only "N" execution, bores 10 to 25 mm)

**Auto switch mounting type**

A	Rail mounting
B	Band mounting

Applicable auto switches and bands are shown on page 6-11-44. Please order auto switches and bands separately.

**Option**

R	Stainless steel piston rod, rod end nut and mounting nut
R2	Stainless steel piston rod and rod end nut

Note) Please refer to page 6-11-47 for additional options. Only one option can be selected.

**Rod boot (Only ø20, ø25)**

Nil	Without rod boot
J	Nylon tarpaulin one side
K	Heat resistant tarpaulin one side
JJ*	Nylon tarpaulin both sides
KK*	Heat resistant tarpaulin both sides

\* In the case of double acting/double rod.

### Mounting Bracket Part No.

Bore size (mm)		8	10	12	16	20	25
Mounting bracket	Foot (1 pc.)	C85L10A	C85L16A	C85L25A			
	Foot (2 pcs. with mounting nut 1 pc.)	C85L10B	C85L16B	C85L25B			
	Flange	C85F10	C85F16	C85F25			
	Trunnion	C85T10	C85T16	C85T25			
	Clevis	C85C10	C85C16	C85C25			
Accessory	Single knuckle joint	KJ4D	KJ6D	KJ8D	KJ10D		
	Double knuckle joint	GKM4-8	GKM6-10	GKM8-16	GKM10-20		
	Floating joint	JA10-4-070	JA15-6-100	JA20-8-125	JA30-10-125		

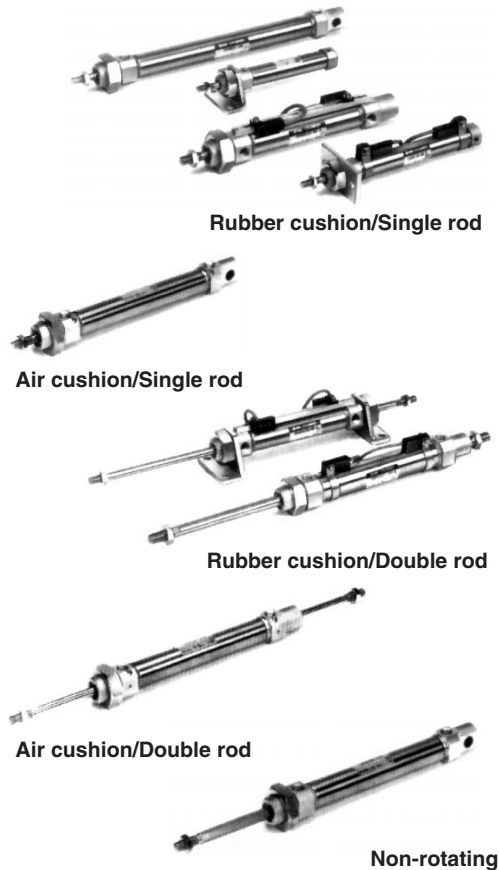
### Replacement Parts For Standard Cylinders

Bore size (mm)	Part no.	Note
20	C85-20PS	Every set includes: n°1 rod seal n°1 seal retaining washer n°1 retaining ring
25	C85-25PS	

### For Non-rotating Cylinders ("K")

Bore size (mm)	Part no.	Note
20	C85K-20PS	Every set includes: n°1 rod seal n°1 seal retaining washer n°1 retaining ring
25	C85K-25PS	

# ISO Cylinder: Standard/Non-rotating Type Double Acting, Single/Double Rod **Series C85**



## Specifications

Bore size (mm)		8	10	12	16	20	25
Piston rod dia. (mm)		4	4	6	6	8	10
Piston rod thread		M4 x 0.7	M4 x 0.7	M6 x 1	M6 x 1	M8 x 1.25	M10 x 1.25
Port size		M5 x 0.8	M5 x 0.8	M5 x 0.8	M5 x 0.8	G 1/8	G 1/8
Action		Double acting, Single/Double rod					
Fluid		Air					
Proof pressure		1.5 MPa					
Max. operating pressure		1.0 MPa					
Min. operating pressure	Spring return	0.1 MPa	0.08 MPa	0.05 MPa	0.05 MPa		
	Spring extended				0.08 MPa		
Ambient and fluid temperature		-20 to 80°C (Built-in magnet: -10 to 60°C)					
Cushion		Rubber cushion, Air cushion (Except ø8) (Non-rotating: Rubber bumper only)					
Lubrication		Not required. Use turbine oil Class 1 ISO VG32, if lubricated.					
Rod boot	Nylon tarpaulin	—				Max. ambient temperature 60°C	
	Heat resistant tarpaulin	—				Max. ambient temperature 110°C*	
Piston speed		50 to 1500 mm/s					
Allowable kinetic energy	Rubber cushion	0.02 J	0.03 J	0.04 J	0.09 J	0.27J	0.4 J
	Air cushion	—	0.17 J	0.19 J	0.4 J	0.66 J	0.97 J
Non-rotating accuracy		±1° 30'	±1° 30'	± 1°	±1°	±0° 42'	±0° 42'
Stroke tolerance (mm)		0/+1				0/+1.4	

\* Maximum ambient temperature of rod boots only.

## JIS Symbol

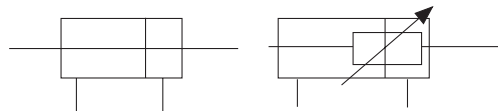
Double acting, Single rod



Rubber cushion

Air cushion

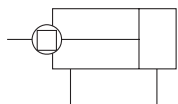
Double acting, Double rod



Rubber cushion

Air cushion

Non-rotating rod: Double acting, Single rod



## Weight (Standard, Non-rotating rod)

(g)

Bore size (mm)		8	10	12	16	20	25
Double action	Basic weight	45	49	96	109	183(203)	258(286)
	Add'l weight for each 10 mm of stroke	3	3.2	6.2	7.2	11.8	18.4
Mounting bracket		C85L□A	20	40	95		
		C85L□B	55	105	210		
		C85F□	12	25	90		
		C85T□	20	50	75		
		C85C□	20	40	85		
Accessory	Single knuckle joint	KJID	17	25	45	70	
	Double knuckle joint	GKM□-□	10	20	50	100	
	Floating joint	JA□-□-□	10	20	50	70	

Calculation: (Example) C85N10-50, C85F10

Basic weight ——— 49 (ø10)g

Additional weight ——— 3.2/10 mm of stroke

Cylinder stroke ——— 50 mm

Mounting bracket ——— 12g

49 + 3.2 x 50/10 = 65g    65 + 12 = 77g

( ) : In the case of air cushion

## 1 High Temperature XB6

### C85 Mounting Bore size – Stroke – XB6

N, E, F, Y 8, 10, 12, 16, 20, 25 mm

Standard cylinder seals are replaced with special ones and other modifications are made in order to enable the cylinder to operate at a high ambient temperature (–10 to 150°C).

#### Possible applications:

- Bore size 8 to 20 mm
- Rubber bumper
- Without magnets (Auto switches cannot be used at high temperature.)
- Single rod — Double acting
- Double rod — Double acting (W)

#### Dimensions unchanged

#### Specifications

Type	Air cylinder
Applicable size	ø8, ø10, ø16, ø20, ø25 mm
Action	Double acting
Ambient temperature range	–10 to 150°C
Piston speed	50 to 500 mm/s
Cushion	Rubber bumper
Material	Seal: Fluorocarbon rubber Wear ring: Fluorocarbon resin
Grease	Fluorinated grease

Note) Contact SMC for non-rotating type.

## 3 Low Speed XB9

### C85 Mounting Bore size – Stroke – XB9

N, E, F, Y 20, 25 mm

The cylinder does not generate any stick-slip phenomenon even at the rated low speed of 10 to 50 mm/s.

All strokes drive at a constant speed smoothly.

#### Possible applications:

- Bore size 20 and 25 mm
- Rubber bumper type only
- With or without magnets
- Single rod — Double acting

#### Dimensions unchanged

#### Specifications

Type	Air cylinder
Applicable size	ø20, ø25 mm
Action	Double acting
Piston speed	10 to 50 mm/s
Cushion	Rubber bumper

Note) Contact SMC for non-rotating type.

## 2 Low Temperature XB7

### C85 Mounting Bore size – Stroke – XB7

N, E, F, Y 20, 25 mm

Standard cylinder packing are replaced with special ones and other modifications are made in order to enable the cylinder to operate at a low ambient temperature (–55 to 70°C).

#### Possible applications:

- Bore size 20 and 25 mm
- Rubber bumper
- Without magnets (Auto switches cannot be used at low temperature.)
- Single rod — Double acting
- Double rod — Double acting (W)

#### Dimensions unchanged

#### Specifications

Type	Air cylinder
Applicable size	ø20, ø25 mm
Action	Double acting
Ambient temperature range	–55 to 70°C
Cushion	Rubber bumper
Material	Seal: Low nitrile rubber Wear ring: Fluorocarbon resin
Grease	Fluorinated grease

Note) Contact SMC for non-rotating type.

## 4 Heavy-duty Scraper XC4

### C85 Mounting Bore size – Stroke – XC4

N, E, F, Y 20, 25 mm

A heavy-duty scraper is used as wiper ring. Ideal for severe applications where the cylinder is exposed to dust, earth and sand. Applicable to casting machines, construction machines, industrial vehicles, etc.

#### Possible applications:

- Bore size 20 and 25 mm
- Rubber bumper type only
- With or without magnets
- Single rod — Double acting
- Double rod — Double acting (W)

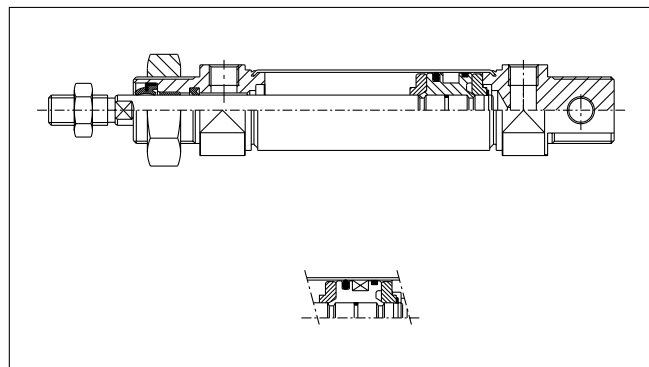
#### Dimensions unchanged

#### Specifications

Type	Air cylinder
Applicable size	ø20, ø25 mm
Max. operating pressure	1 MPa (10 bar)
Min. operating pressure	0.08 MPa (0.8 bar)
Cushion	Rubber bumper
Wiper ring	NBR (SCB)

Note) Not applicable for non-rotating type.

#### Construction



CJ1

CJP

CJ2

CM2

CG1

MB

MB1

CA2

CS1

C76

C85

C95

CP95

NCM

NCA

D-

-X

20-

Data