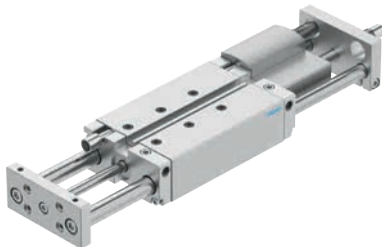


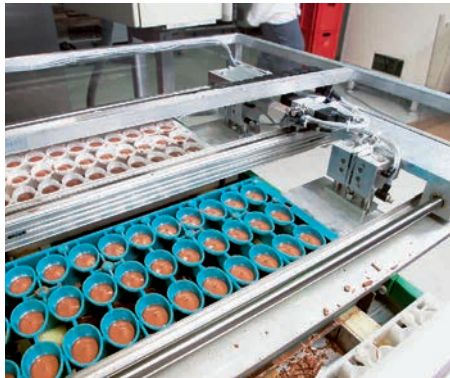
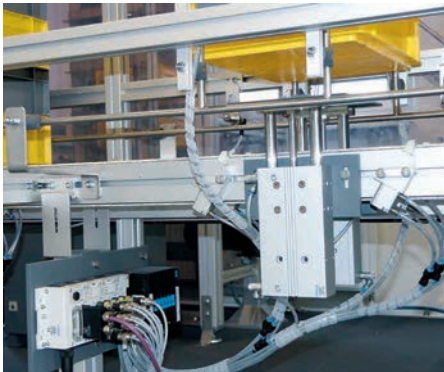
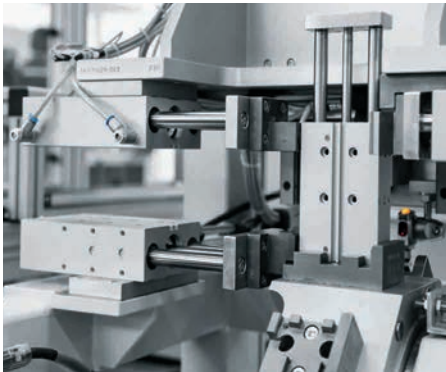
Characteristics

At a glance			
Drive and guide unit in a single housing		Sturdy and precise	High resistance to torques and transverse loads
<ul style="list-style-type: none"><li>Minimal space requirement</li><li>Minimal mounting time</li><li>Choice of compressed air supply ports</li><li>Wide range of mounting options</li></ul>		<ul style="list-style-type: none"><li>Good protection against torsion</li><li>High rigidity</li><li>Maintenance-free</li></ul>	<ul style="list-style-type: none"><li>With plain-bearing guide: high rigidity thanks to large-diameter guide rods and four plain-bearing bushes</li><li>With recirculating ball bearing guide: for applications involving torque loads</li></ul>

Wide choice of variants	
Guided drive DFM	Guided drive DFM-B
<ul style="list-style-type: none"><li>Basic drive with strokes of up to 200 mm</li></ul>	<ul style="list-style-type: none"><li>Drive with strokes of up to 400 mm</li><li>With precision adjustment of end positions</li><li>With pneumatic cushioning, adjustable PPV</li><li>With shock absorber, self-adjusting, progressive</li></ul>



Application examples		
Clamping	Lifting	Stopping
The guided drive is perfectly suited to clamping components for reliable further processing.	The guided drive effortlessly transports and lifts loads of over 200 kg, powerfully and dynamically.	Loads of up to 150 kg are stopped reliably and safely, making the guided drive a resilient and sturdy stopper cylinder.



## Type codes

001	Series	
DFM	Guided drive, double-acting	

002	Piston diameter [mm]	
6	6	
10	10	
12	12	
16	16	
20	20	
25	25	
32	32	
40	40	
50	50	
63	63	
80	80	
100	100	

003	Stroke range [mm]	
...	10 ... 400	

004	Generation	
	Standard	
B	Function-optimised	

005	Cushioning	
P	Elastic cushioning rings/plates on both sides	
PPV	Pneumatic cushioning, adjustable at both ends	
YSRW	Shock absorber, self-adjusting, progressive	

006	Position sensing	
A	For proximity sensor	

007	Guide	
GF	Plain bearing	
KF	Recirculating ball bearing guide	

008	Special material properties	
	None	
F1A	Recommended for production facilities for the manufacture of lithium-ion batteries	

009	Temperature range	
	Standard	
S6	Heat-resistant seals max. 120 °C	

010	Precision adjustment extended	
	None	
AJ	Precision adjustment in the end positions, advancing	

011	Precision adjustment retracting	
	None	
EJ	Precision adjustment in the end positions, retracting	

012	Slot cover, sensor slot	
	None	
...S	1 ... 10 pieces	

013	Proximity switch, with cable, 2.5 m	
	None	
...G	1 ... 10 pieces	

014	Proximity switch, contactless, with cable, 2.5 m	
	None	
...I	1 ... 10 pieces	