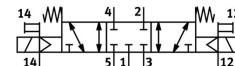
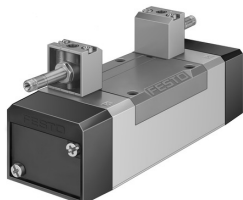


# Solenoid valve MFH-5/3G-D-3-S-C-EX

Part number: 535974

FESTO



General operating condition

## Data sheet

| Feature   | Value   |
|---|---|
| Valve function                                    | 5/3 closed                                    |
| Type of actuation                                 | Electric                                      |
| Construction width                                | 65 mm   |
| Standard nominal flow rate                        | 4100 l/min                                    |
| pneumatic working port                            | Sub-base size 3 to ISO 5599-1<br>G1/2         |
| Operating voltage                                 | Via solenoid coil, must be ordered separately |
| Operating pressure                                | -0.09 MPa ... 1.6 MPa                         |
| Operating pressure                                | -0.9 bar ... 16 bar                           |
| Design  | Piston gate valve                             |
| Type of reset                                     | Mechanical spring                             |
| CE mark (see declaration of conformity)           | To EU Explosion Protection Directive (ATEX)   |
| CE marking (see declaration of conformity)        | To UK EX instructions                         |
| ATEX category gas                                 | II 2G   |
| ATEX category dust                                | II 2D   |
| Explosion ignition protection type for gas        | Ex h IIC T4 Gb                                |
| Explosion ignition protection type for dust       | Ex h IIIC T105°C Db                           |
| Explosion ambient temperature                     | -5°C ≤ Ta ≤ +40°C                             |
| Explosion protection certification outside the EU | EPL Db (GB)<br>EPL Gb (GB)                    |
| Degree of protection                              | IP65  |
| Nominal size                                      | 14.5 mm                                       |
| Grid dimension                                    | 71 mm   |
| Exhaust-air function                              | With flow control option                      |
| Sealing principle                                 | Soft  |
| Mounting position                                 | optional                                      |
| Conforms to standard                              | ISO 5599-1                                    |
| Manual override                                   | Detenting via accessory<br>Non-detenting      |
| ISO code  | 369   |
| Type of piloting                                  | Pilot actuated                                |
| Pilot air supply                                  | External                                      |
| Flow direction                                    | Reversible                                    |
| Symbol  | 00991076                                      |
| lap   | Overlap                                       |
| Pilot pressure                                    | 3 bar ... 10 bar                              |

| Feature                                | Value   |
|--|---|
| Switching time off                     | 77 ms   |
| Switching time on                      | 36 ms   |
| Max. positive test pulse with 0 signal | 2200 µs   |
| Max. negative test pulse with 1 signal | 3700 µs   |
| Explosion protection                   | Zone 1 (ATEX)<br>Zone 1 (UKEX)<br>Zone 2 (ATEX)<br>Zone 21 (ATEX)<br>Zone 21 (UKEX)<br>Zone 22 (ATEX) |
| Operating medium                       | Compressed air to ISO 8573-1:2010 [7:4:4]   |
| Note on operating and pilot medium     | Lubricated operation possible (in which case lubricated operation will always be required)            |
| Vibration resistance                   | Transport application test with severity level 1 to FN 942017-4 and EN 60068-2-6                      |
| Shock resistance                       | Shock test with severity level 2 to FN 942017-5 and EN 60068-2-27                                     |
| LABS (PWIS) conformity                 | VDMA24364-B1/B2-L   |
| Media temperature                      | -10 °C ... 60 °C  |
| Sound pressure level                   | 85 dB(A)  |
| Pilot medium                           | Compressed air to ISO 8573-1:2010 [7:4:4]   |
| Ambient temperature                    | -5 °C ... 40 °C   |
| Product weight                         | 1040 g  |
| Electrical connection                  | Via F coil, to be ordered separately  |
| Type of mounting                       | On sub-base<br>Via through-hole and screw   |
| Pilot exhaust port 82                  | M5  |
| Pilot exhaust port 84                  | M5  |
| Pilot air port 12                      | Sub-base size 3 to ISO 5599-1   |
| Pilot air port 14                      | Sub-base size 3 to ISO 5599-1   |
| Pneumatic connection, port 1           | Sub-base size 3 to ISO 5599-1   |
| Pneumatic connection, port 2           | Sub-base size 3 to ISO 5599-1   |
| Pneumatic connection, port 3           | Sub-base size 3 to ISO 5599-1   |
| Pneumatic connection, port 4           | Sub-base size 3 to ISO 5599-1   |
| Pneumatic connection, port 5           | Sub-base size 3 to ISO 5599-1   |
| Note on materials                      | RoHS-compliant  |
| Material seals                         | HNBR<br>NBR   |
| Material housing                       | Die-cast aluminium  |