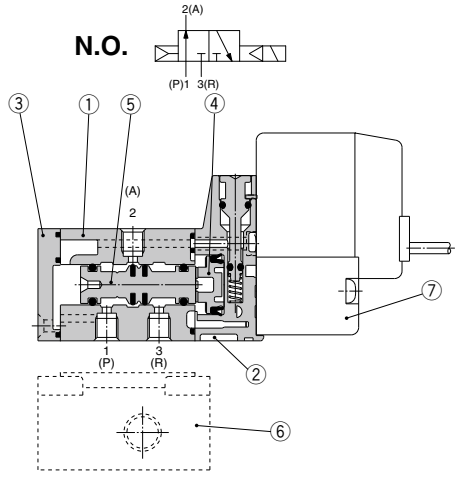
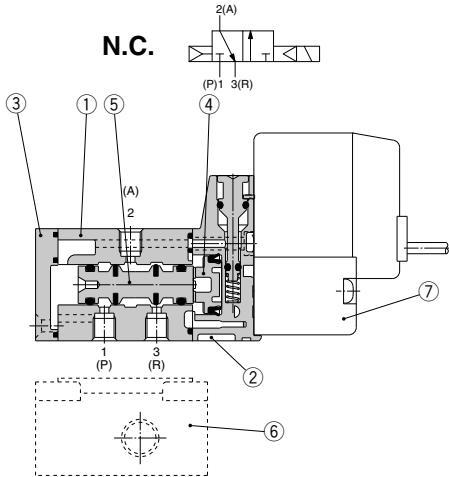


## Construction



### Component Parts

No.	Description	Material	Note
1	Body	Zinc die-casted	White
2	Piston plate	Resin	White
3	End cover	Resin	White
4	Piston	Resin	—
5	Spool valve assembly	Aluminum, H-NBR	—

### Replacement Parts

No.	Description	Part no.	Note
6	Sub-plate <sup>Note)</sup>	SYJ300-9-1(-Q)	Zinc die-casted
7	Pilot valve	V111(T)-□□□□	

Note) Add suffix "-Q" for the CE-compliant product.

## How to Order Pilot Valve Assembly

V111□—5G□□

### Coil type

Nil	Standard
T	With power saving circuit (24, 12 VDC only)

\* Power saving circuit is not available for W□ type.

### Rated voltage

5	24 VDC
6	12 VDC
V	6 VDC
S	5 VDC
R	3 VDC
1	100 VAC 50/60 Hz
2	200 VAC 50/60 Hz
3	110 VAC 50/60 Hz [115 VAC 50/60 Hz]
4	220 VAC 50/60 Hz [230 VAC 50/60 Hz]

\* For type W□, only DC voltage is available.  
\* CE-compliant: For DC only.

### Light/Surge voltage suppressor

Nil	Without light/surge voltage suppressor
S	With surge voltage suppressor
Z	With light/surge voltage suppressor
R	With surge voltage suppressor (Non-polar type)
U	With light/surge voltage suppressor (Non-polar type)

\* For AC voltage valves there is no "S" option. It is already built into the rectifier circuit.  
\* For "R" and "U", only DC voltage is available.  
\* Power saving circuit is only available for the "Z" type.

### Electrical entry

G	Grommet, 300 mm lead wire
H	Grommet, 600 mm lead wire
L	With lead wire
LN	L plug connector Without lead wire
LO	Without connector
M	With lead wire
MN	M plug connector Without lead wire
MO	Without connector
WO	M8 Without connector cable
W□	With connector cable <sup>Note 1)</sup>

\* For connector cable of M8 connector, refer to page 646.  
Note 1) Enter the cable length symbols in □.  
Please be sure to fill in the blank referring to page 646.

Note) Since V111 is CE-compliant as standard, the suffix "-Q" is not necessary.