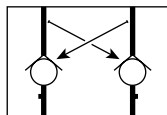




A

Dual P.O. Check Valve

Combined with a double 3/2 NC + NC valve, this module will block both flows and stop cylinder movement as soon as the valve's outputs are both exhausted. Better than a 3-Position valve, it provides more precise positioning when fitted close to the cylinder. Standard with manual release buttons.



P2M1PXCA

Dual P.O. Check Valve Size 1

Description	Size 1
Dual Pilot Operated	P2M1PXCA Weight .88 oz



Pneumatic Connectors for Size 1 Dual P.O. Check Valves

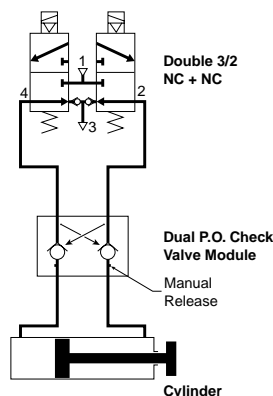
		Elbow Version		Straight Version	
		Weight (oz)	Order Code	Weight (oz)	Order Code
Tube Push-in Connector	5/32" = 4mm OD	0.18	CMD04-1	0.07	FMD04-1
	6mm OD	0.18	CMD06-1	0.11	FMD06-1
	1/4" OD	0.18	CMD07-1B	0.11	FMD07-1B
Double Male Union (For Peripheral Valve Modules)	—	—	—	0.21	HMDXX1

Note: 85 Durometer minimum for pneumatic connectors.

Application

At the outputs of a double 3/2 NC + NC valve, the dual P.O. check valve module achieves efficient and stable cylinder positioning. As soon as both lines are exhausted by the main control valve, the two internally piloted check valves close tight. The cylinder is then stabilized.

The manual pressure releases may then eventually be used for an adequate machine positioning.



Dual P.O. Check Valve Size 2

Description	Size 2
Dual Pilot Operated	P2M2PXCA Weight .88 oz



Pneumatic Connectors for Size 2 Dual P.O. Check Valves

		Elbow Version		Straight Version	
		Weight (oz)	Order Code	Weight (oz)	Order Code
Tube Push-in Connector	6mm OD	0.18	CMD06-2	0.11	FMD06-2
	1/4" OD	0.18	CMD07-2B	0.11	FMD07-2B
	8mm OD	0.21	CMD08-2	0.14	FMD08-2
	3/8" OD	0.21	CMD09-2B	0.14	FMD09-2B
	10mm OD	0.25	CMD10-2	0.18	FMD10-2
	12mm OD	0.28	CMD12-2	0.21	FMD12-2
	1/2" OD	—	—	0.21	FMD13-2B
Double Male Union (For Peripheral Valve Modules)	—	—	—	0.28	HMDXX2

Note: 85 Durometer minimum for pneumatic connectors.