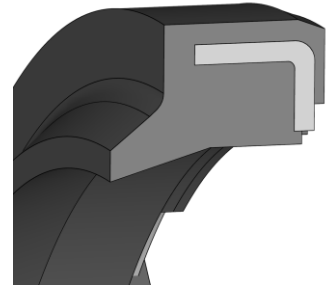


WIPER AM 45



DESCRIPTION

Product group: Wiper

Design: M metal reinforced

Profile no.: 45

Material: NBR 90, steel acc. to DIN EN 10139

Colour: black

INSTALLATION

The AM 45 wiper is installed in an axially accessible housing. The advantage lies in the simple design of the installation housing and practical easy installation, in particular with smaller diameters. Please note that the installation housing is designed with light chamfering.

OPERATIONAL APPLICATION LIMITS

Temperature (°C): -30 to +100

Running speed (m/s): ≤ 1

REMARKS

The metal ring ensures the correct functional fit of the wiper in the installation housing. The metal ring is covered by the elastomer which provides for a correct press fit with an increased sealing effect on the outer circumference.

MEDIA

- Hydraulic oils acc. to DIN 51524 Part 1 – 3
- Lubricating oils
- Mineral oil based lubricating greases
- Highly non-flammable hydraulic fluids HFA, HFB, HFC acc. to VDMA 24317

FUNCTION

The AM 45 is a single-acting wiper. Because it is pressed against the rod, dirt is wiped from the surface by the action of the rod as it retracts. The AM 45 is reinforced by a metal ring which is vulcanized into the elastomer body.

