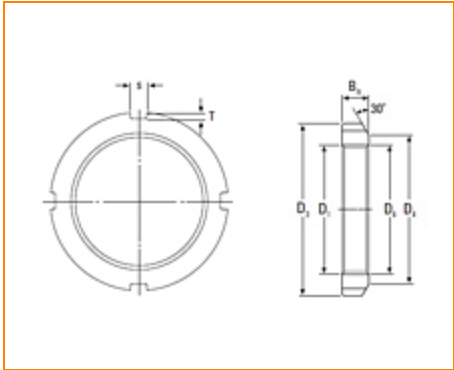




**The Timken Company**  
 4500 Mt Pleasant St. NW  
 N. Canton, OH 44720  
**Phone:** (234) 262-3000  
**E-Mail:** [CustomerCAD@timken.com](mailto:CustomerCAD@timken.com) • **Web site:** [www.timken.com](http://www.timken.com)

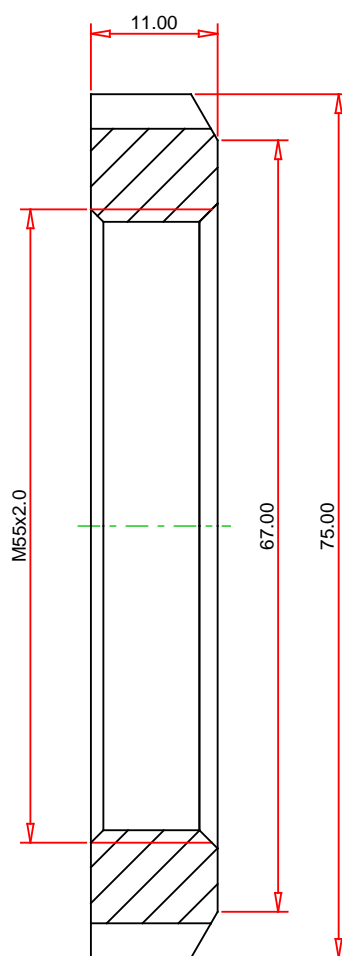
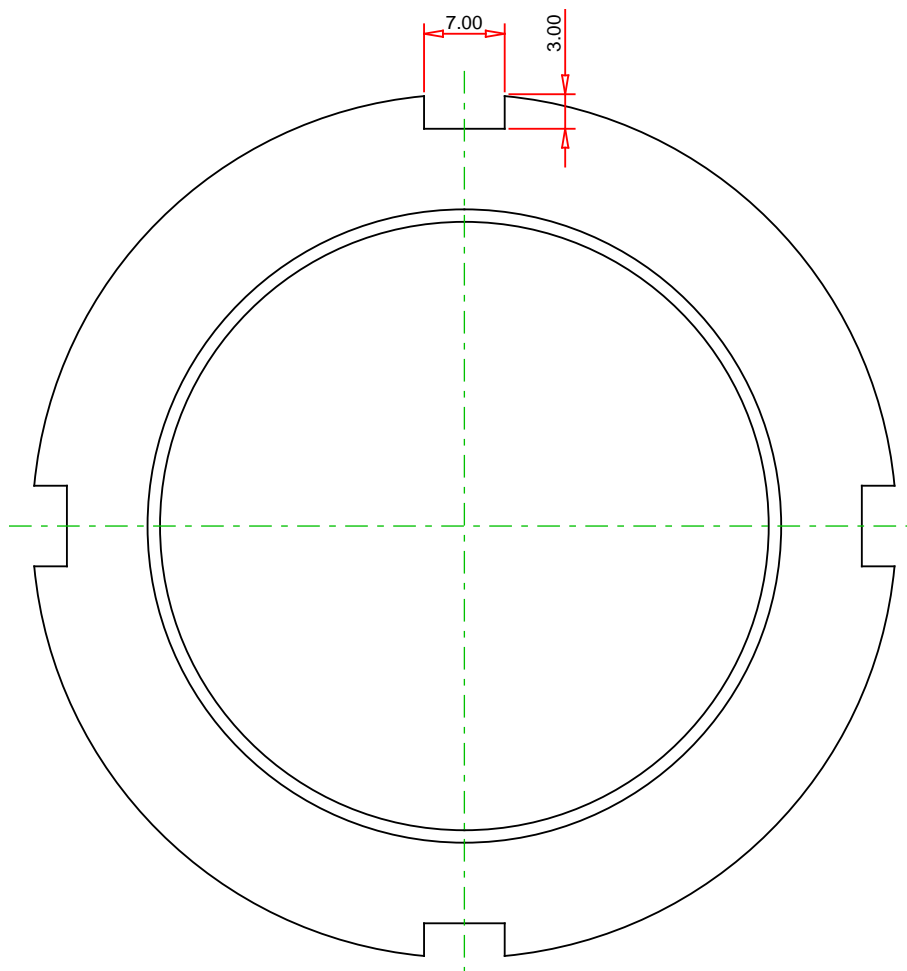
Part Number KM11, Metric Locknut



Specifications	
Thread $D_1^1$	M55x2
$D_3$	75.000 mm
$D_4$	67 mm
$B_n$	11 mm
s	7 mm
T	3 mm
Lockwasher	MB 11

<sup>1</sup> Means metric thread and the digits are major diameter of thread and pitch.  
 Trmeans 30°; trapezoid thread and the digits are major diameter of thread and pitch.





## METRIC UNITS

**TIMKEN®**

**THE TIMKEN COMPANY**  
NORTH CANTON, OHIO USA

**KM11**  
Metric Locknut