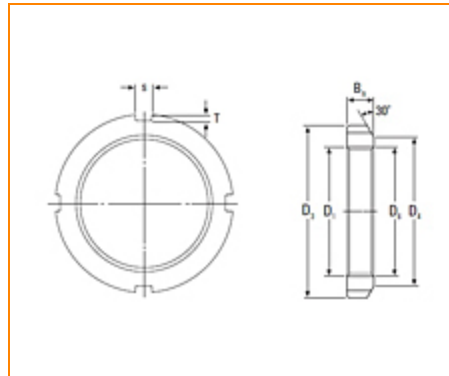




**The Timken Company**  
 4500 Mt Pleasant St. NW  
 N. Canton, OH 44720  
**Phone:** (234) 262-3000

**E-Mail:** [CustomerCAD@timken.com](mailto:CustomerCAD@timken.com) • **Web site:** [www.timken.com](http://www.timken.com)

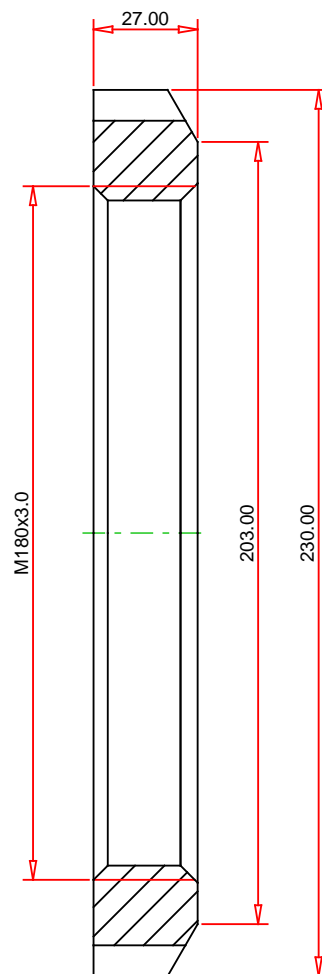
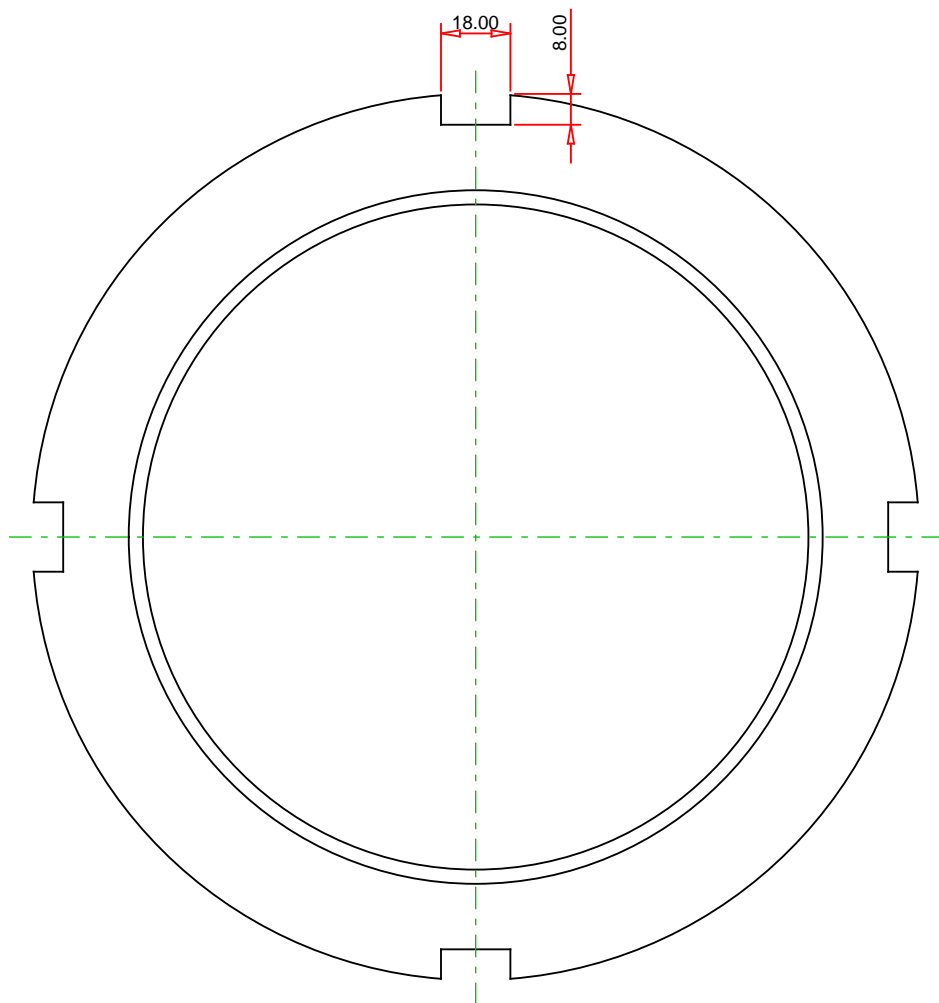
## Part Number KM 36, Metric Locknut



### Specifications

Thread $D_1$ <sup>1</sup>	M180x3.0
$D_3$	230 mm
$D_4$	203 mm
$B_n$	27 mm
s	18 mm
T	8 mm
Weight	3.07 Kg
Lockwasher	MB 36

<sup>1</sup> Means metric thread and the digits are major diameter of thread and pitch.  
 Tr means 30°; trapezoid thread and the digits are major diameter of thread and pitch.



## METRIC UNITS

**TIMKEN®**

**THE TIMKEN COMPANY**  
NORTH CANTON, OHIO USA

**KM 36**  
Metric Locknut