

# Speed Controller: Standard Type

## Series AS

### Elbow Type (Metal Body)

#### Minimizes installation time and cost

Fittings and tubing are not necessary because this type screws directly into the actuator. Thus, piping labor and cost can be eliminated.

#### Body swivels 360°

Swivel type allows free setting of piping.

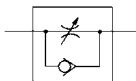
#### Speed may be accurately controlled even at low speeds.

#### Able to control and set a constant speed easily.

#### Retainer prevents accidental loss of needle.



JIS Symbol



P.15-11-3

#### Model/Specifications

| Specifications                     | Model                             | AS1200-M3                | AS1400-M3          | AS12□0-M5                                    | AS12□0-U10/32  | AS22□0-01 | AS22□0-02 | AS32□0-03 | AS42□0-04 |
|------------------------------------|-----------------------------------|--------------------------|--------------------|--|----------------|-----------|-----------|-----------|-----------|
| Port size                          |                                   | M3 x 0.5                 | M5 x 0.8           | 10-32UNF                                     | 1/8            | 1/4       | 3/8       | 1/2       |           |
| Applicable cylinder bore size (mm) |                                   | 2.5, 4, 6                | 6, 10, 15, 20, 25  | 20, 25, 32, 40                               | 32, 40, 50, 63 | 80, 100   |           |           |           |
| Proof pressure                     |                                   | 1.05 MPa                 | 1.5 MPa            |  |                |           |           |           |           |
| Max. operating pressure            |                                   | 0.7 MPa                  | 1 MPa              |  |                |           |           |           |           |
| Min. operating pressure            |                                   | 0.1 MPa                  | 0.1 MPa            |  |                |           |           |           |           |
| Ambient and fluid temperature      |                                   | -5 to 60°C (No freezing) |                    |  |                |           |           |           |           |
| Number of needle rotation          |                                   | 10 turns                 | 8 turns            | 10 turns                                     |                |           |           |           |           |
| Option                             |                                   | —                        | Hexagonal lock nut | With seal, Hexagonal lock nut, Nickel plated |                |           |           |           |           |
| Weight (g)                         |                                   | 3                        | 6                  | 10   | 29             | 64        | 106       | 181       |           |
| Controlled flow                    | Flow rate ℓ/min (ANR)             | 20                       | 105                | 230  | 460            | 920       | 1700      |           |           |
| (Free flow)                        | Effective area (mm <sup>2</sup> ) | 0.3                      | 1.6                | 3.5  | 7              | 14        | 26        |           |           |

Note 1) Flow rate values are measured at 0.5 MPa and 20°C.

Note 2) Meter-in type not available on AS1200-M3, AS1400-M3.

Note 3) Distinction between meter-out/meter-in types by appearance.

Those are distinguished by the lock nut. The meter-out type is electroless nickel plated, while the meter-in type is black zinc chromate plated.

Note 4) AS1200, AS1400, AS22□0 are electroless nickel plated as standard. (N specifications)

#### How to Order

|    |   |   |   |   |   |    |   |
|----|---|---|---|---|---|----|---|
| AS | 2 | 2 | 0 | 0 | — | 01 | S |
|----|---|---|---|---|---|----|---|

**Body size**

|   |                   |
|---|-------------------|
| 1 | M3, M5 standard   |
| 2 | 1/8, 1/4 standard |
| 3 | 3/8 standard      |
| 4 | 1/2 standard      |

**Type**

|   |                                 |
|---|---------------------------------|
| 2 | Direct cylinder elbow type      |
| 4 | Direct cylinder flat elbow type |

**Control type**

|   |           |
|---|-----------|
| 0 | Meter-out |
| 1 | Meter-in  |

**Thread type**

| Symbol | Cylinder side             | Tube side |
|--------|---------------------------|-----------|
| Nil    | R                         | Rc        |
|        | Metric thread (M3, M5)    |           |
|        | Unified thread (10-32UNF) |           |
| N      | NPT                       |           |
| F      | G *                       |           |

\* Male thread comes with R thread.

**Option**

|     |                           |
|-----|---------------------------|
| Nil | None                      |
| S   | With seal                 |
| K   | Hexagonal lock nut        |
| N   | Electroless nickel plated |

\* If more than one option is required, write option part numbers in the order of "S", "K", "N".

**Bore size**

| Symbol | Bore size | Applicable series      |
|--------|-----------|------------------------|
| M3     | M3 x 0.5  | AS1200-M3<br>AS1400-M3 |
| M5     | M5 x 0.8  | AS12□0-M5              |
| U10/32 | 10-32UNF  | AS12□0-U10/32          |
| 01     | 1/8       | AS22□0-01              |
| 02     | 1/4       | AS22□0-02              |
| 03     | 3/8       | AS32□0-03              |
| 04     | 1/2       | AS42□0-04              |