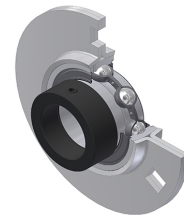


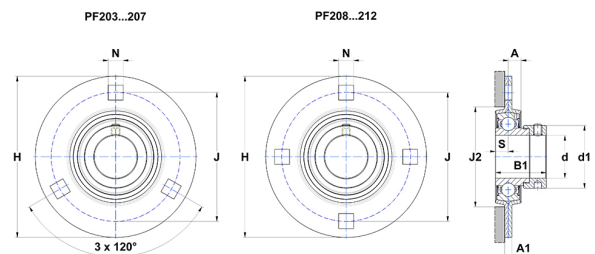
PDF technical sheet ESPF210



Bearing units

pressed steel housing, radial insert ball bearing with eccentric locking collar, single lip seal, for low-temp. applications

Product definition	
B	30.20 mm
A	10.50 mm
A1	8 mm
A2	19.20 mm
B1	43.70 mm
d	50 mm
d1	67.20 mm
H	155.60 mm
H	155.60 mm
J	127 mm
N	13.50 mm
s1	33.40 mm
S	11 mm



Product performance	
C	35.10 kN
C0	23.20 kN
T min.	-20 °C
T max.	100 °C

Other features	
Weight	1.70 kg
Recommended tightening torque for set screw	11.50 Nm
Designation of housing	PF210
Designation of bearing	ES210G2